



Inside



Health hazards all clear for Kaupokonui and Opunake Lake. Page 3.



Claire is Taranaki's Rose. Page 7.



Roadside collections to cease for businesses in Eltham. Page 4.



Last Paradise comes to Opunake. Page 23.

Celebrating 125 years of schooling under the mountain

Over three hundred people registered for the Kaponga Primary School 125th anniversary celebrations held during Easter Weekend. Ninety three year-old Ian Brewer, who made the trip over from Bathurst Australia was one of them. For the last 40 years Australia has been home, but he has been back to Kaponga "three or four times in the last 10 years," he said. "I like coming back here and having a look around."

Until his retirement, he had been senior lecturer in Education at Charles Sturt University, formerly the Mitchell College of Advanced Education.

Among those wanting to catch up with him was Don Betts from New Plymouth.

"It's a great community, Kaponga, and your years in Kaponga always remain with you," he said. "That's why you get so many people coming back to reunions like this one, and the one for the Kaponga Fire Brigade."

On the Saturday, Mr Brewer and his sister, Irene Walker who now lives in Levin, and is due to turn 100 in August, cut one of the two jubilee cakes. The other was cut by current pupil Ella Krutz, and former pupil Maddi Butler, who now attends Stratford High School. These two represented the Thurston



Ian Brewer and Irene Walker cut the jubilee cake.

and Law families, which both have long associations with Kaponga School.

Before then, Randall Rei gave the opening mihi, performing the role which his uncle, Tom Ngatai carried out at the school's centenary celebrations in 1991.

South Taranaki District mayor Ross Dunlop said he had a family link to Kaponga, as his grandmother Annie Law had come from here, and her father Robert Law had

been on the Kaponga Town Board.

"Sometimes these things go past without being acknowledged, and it's really neat you stopped to celebrate them," he said. "Kaponga is a thriving community and there's still a lot happening here."

Jubilee organising committee chairperson

Alison Smith said her involvement with the school went back to 2003 when her daughter started at the school. At that time the school roll was 81. A year later she was on the board of trustees. Mergers and restructuring meant Kaponga would later take children from Riverlea, Kapuni, Mangatoki and Mahoe. The school's roll

peaked at 140 in 2007.

Shane Downs, who has been principal for the last eight and a half years, said his association with Kaponga goes back much further, to his schooling days in Stratford.

"Whilst the town has changed a little since then, it still has a great reputation

Continued page 12

That stolen meat may not be so great

The person or persons who went sheep stealing on the night of 29-30 March may have bitten off more than they could chew.

At least one sheep was stolen that night from the Opunake Golf Club on Te Namu Road, Constable Tony Willetts of the Opunake police said.

"Of note these particular sheep had just been treated for facial eczema and drenched for lung worm within the past couple of days. Due to this, if the meat is consumed it could present a food safety risk," he said.

If anyone observed anything

suspicious in the area over night or has any information to assist in the investigation,

please contact Constable Tony Willetts at the Opunake Police Station.

LOGFIRES * GAS * CENTRAL HEATING

See the experienced team at Penniall Jordan



Servicing Taranaki since 1973

- ✓ Qualified home consultations
- ✓ Free quotations
- ✓ Experienced, skilled installers
- ✓ Council permits processed
- ✓ Extensive spare parts service



New Zealand home Heating Association Member.

From quotation through to installation, our knowledge and experience will ensure you receive the right heating solution for you and your home

Don't get caught out - talk to us today!



Penniall Jordan
PLUMBING • HEATING • GASFITTING

The heat is on!

Penniall Jordan & Co Ltd

191 Broadway, PO Box 343
STRATFORD 4352

Ph (06) 765 5336, Fax (06) 765 5337

pennialljordan.co.nz

info@pennialljordan.co.nz

Our next issue is due out on **APRIL 22**

We welcome your contributions
Please send to
editorial@opunakecoastalnews.co.nz

BUY ANY LAMB, BEEF or PORK ROAST



Receive a FREE pair of OVEN MITTS!

While stocks last

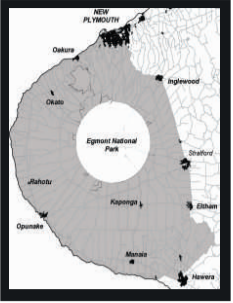


4 SQUARE 45
77 TASMAN ST
OPUNAKE
06 761 8668
OPEN 7am to 9pm EVERYDAY!

45

Talk to us today!

Opunake and Coastal News is distributed free to every home & business within the rural area, bounded in the north by the New Plymouth city border, extending east to Egmont Village and around to the edge of Stratford, south to Hawera city border and inland to Kaponga & Eltham. We want to be involved with your business. Call today and discuss your marketing options with us.



OPUNAKE & COASTAL NEWS

EDITORIAL: The Flag decision

The voters have had their say and the decision to keep the existing flag has been made – albeit by a narrow margin. Good on Mr Key for promoting the idea of a new flag, a move which was well overdue. He has been unfairly targeted, as if the

whole debate is something to do with his ego. In fact, he was only voicing the feelings of many New Zealanders who consider that our flag is too similar to Australia's and does not reflect our nationhood – in all its diversity, racial and

otherwise - very aptly. I voted for a new flag for the aforementioned reasons. It is a pity that many who voted for the existing flag did so because they did not like the chosen alternative. I expect the debate will re-merge, perhaps in another ten

years or so. Perhaps it would be better if people could vote for the same (Option 1) or another flag (Option 2) and, if Option 2 is supported could then vote for the alternative flag from several pre-selected alternatives. Rolland McKellar

St John annual appeal has schools and rest homes seeing green

The St John Annual Appeal is running until April 10. Fundraising initiatives and volunteer collectors across the country aim to raise \$2 million. The donations will be used to buy ambulances and lifesaving equipment for communities throughout New Zealand.

“Demand for our services has never been greater, and as a charity we rely on the generosity of the communities we serve. We never take their trust and support for granted,” says St John Chief Executive Peter Bradley.

In Taranaki local rest homes and schools are showing their support: St Patricks School in Inglewood, Mokau School, Lepperton School, Ramanui School, St Mary's Diocesan School in Stratford, Kaponga School, Radius Thornleigh Park in New Plymouth, Ultimate Care Rhapsody in New Plymouth, and Taurima Retirement Home in New Plymouth have all signed up for 'Be seen for Team



Linda Campbell (centre) from Opunake St John answering questions from interested passers by.

Green,' where they will dress in green and fundraise for St John.

“It's amazing to have such community spirit and support joining us in our annual appeal. The local support means vital emergency services can continue in Taranaki communities,” says St John

Central Region Fundraising and Marketing Manager Vanessa Williams.

Annual Appeal fundraising in Taranaki and surrounding areas will fund lifesaving equipment such as a paramedic's first response kit costing \$3,500 which includes essential equipment for patient treatment.

It costs approximately \$2,740 to run one ambulance per day, and it costs \$181,981 for a new ambulance. In the last year, St John received 455,000, 111 emergency ambulance calls and treated and/or transported 428,319 patients in the last year.

RENTAL VEHICLES



- CHARTER BUSES
- VANS
- TOUR BUSES

ALUMINIUM SCAFFOLDING FOR HIRE

\$35 per day, \$50 weekend. More than 6 days \$30 per day.

WATERBLASTER FOR HIRE

Petrol 3000 psi 15L/minC Cost: Half day \$90, Full day \$120, Weekend \$130. Friday after 3pm return Monday 9am. Bond for waterblaster and scaffolding \$50. For more information contact Tracey or Christine at

PICKERING MOTORS

11 TENNYSON ST OPUNAKE PH (06) 761-8363 0800 22 11 20 Email: pickering.motors@xtra.co.nz

MEETINGS:

Sundays at 38 Tayler Street, Eltham at 10.30am.

Phone 06 764 7358 for other Bible Studies.



Eltham Message Church

Pastor Richard Oliver We are an independent Bible Believing Church All are most welcome www.messagechurch.com

BBC: GOD

All religions have gods. They are superior beings that the believer acknowledges. Most religions have lots of gods with a supreme god in charge. This is polytheism, a belief in many gods. Zeus in Greek mythology, Hindus of India, the Norse Vikings and the American Indians, among many others have this concept underlying their faith.

There are only three religions that have just one God: Islam, Judaism

and Christianity. This is monotheism. All three acknowledge the same God, the God of Abraham.

Muslims call Him Allah and believe that Ishmael, the first born of Abraham from whom they descend, is the chosen line. Israelis, or Jews, believe that His name is Jehovah. They believe Abraham's second son Isaac, and his son Jacob (also known as Israel), is the true line.

Christians, however, seem

to have avoided a definitive name but, believing God to be three persons yet one God, have given Him the titles, of Father, Son and Holy Ghost. And that goes against Judaism and Islamic understanding. They cannot believe that three persons make one God.

All three religions, Judaism, Muslim and Christianity accept the Old Testament as being from God but Muslims believe that parts were corrupted and

that the Koran corrects those errors.

There are many Old Testament quotes that God is one. Some examples are “Thus saith the LORD the King of Israel, and his redeemer the LORD of hosts; I am the first, and I am the last; and beside me there is no God.” (Isaiah 44 v 6). And two verses on (v8) adds to that. Also there is, “I, even I, am the LORD; and beside me there is no saviour.” (Isaiah 43 v11)

Christians claim that Jesus is a part of God. He is the Saviour. The Jews (Israelis) cannot accept a saviour other than Jehovah. In their eyes, Jesus being the son of God cannot fit the bill. Muslims do not expect a saviour. Islam only claims that Mohammed is God's prophet. Mohammed has not paid for sin, he cannot. Hence much of what is preached in Islam is about keeping pure through laws.

Only Christianity, through God dying on the cross, makes people pure enough to meet God. And that is the Easter message.

Richard Oliver Pastor Eltham Message Church www.messagechurch.com

OPUNAKE & COASTAL NEWS

Registered office: 23 Napier Street, Opunake PO Box 74, Opunake

Telephone and Fax: (06) 761-7016 a/h ph: (06) 761-8206

e-mail: Advertising ads@opunakecoastalnews.co.nz Editorial editorial@opunakecoastalnews.co.nz Accounts accounts@opunakecoastalnews.co.nz

website: www.opunakecoastalnews.co.nz

Editor Bernice M'Kellar - Rolland M'Kellar Bryan Kirk

Journalists/Sales Vanessa Smith Tina Chapman

Advertising/Production: Thursday, fortnightly

Delivery: Registered as a newspaper.



The Opunake and Coastal News is distributed free to every home and business within the rural area bounded in the north by the New Plymouth city border, extending east to Egmont Village, and around to the edge of Stratford, south to the Hawera city border and inland to Kaponga and through Eltham.

• New Houses • All Farm Buildings
• Alterations • Kitchens
• Roofing • Decks

For all your building requirements, contact us today
HEARTLAND CONSTRUCTION
48 Allison Street - Opunake - Taranaki - Phil on 027 236 7129



Carrying the cross on Good Friday

Walking to remember Christ's sacrifice

Opunake churches have again combined to commemorate Easter, the high point of the Christian calendar. On the Thursday evening before Easter there was a Maundy Thursday service at St Barnabas' Church to commemorate Jesus' last night before his crucifixion.

commemorations began the next day with a breakfast at St Pauls. From here the annual Walk of Witness began, with the carrying of the cross to the cenotaph, where others joined in.

With people taking turns to carry the cross, the walk proceeded along Havelock Street to Gisborne Terrace, stopping at St Paul's on the

way. The cross was then taken to Our Lady Star of the Sea via Ihaia and Whitcombe Roads, and then to St Barnabas'.

Along the way walkers sung Amazing Grace, How Great Thou Art, and Were you there when they crucified my Lord. At each of the churches there was a time for a reflection or reading,

whether on Peter's denial of Jesus, or a reading from Hebrews on the meaning of Christ's sacrifice on the cross.

From St Barnabas' the cross was taken to The Wave Church, where the combined service was held. During the service there was an opportunity for people to place a nail in the cross

to identify with Christ's sacrifice.

Having commemorated their saviour's crucifixion on

Friday, each of the churches celebrated his resurrection with their own services on Sunday.



Health warnings at the Kaupokonui River mouth have been lifted.

Health Warnings lifted for Kaupokonui, Waingongoro and Opunake Lake

South Taranaki District Council regulatory services manager Doug Scott, says health warnings for Kaupokonui River mouth, Waingongoro River mouth and Opunake Lake have all been lifted.

Testing by the Taranaki Regional Council has found that levels of blue-green algal bloom (Cyanobacteria), at the mouth of the Waingongoro River and *Escherichia coli* (E.coli) at Kaupokonui River mouth and Opunake Lake have returned to normal.

Warnings signs for these locations have been removed. Routine sampling by the

Taranaki Regional Council had found high levels of *Escherichia coli* (E.coli) at Kaupokonui River mouth and Opunake Lake, and visitors to these areas had been advised not to collect

shellfish and plant life or come into contact with the water. Testing at the Kaupokonui River mouth in previous years has indicated the source is waterfowl (e.g Pukeko) and cattle.

HOW TO BE RUBBISH FREE



Specialising in:

- * FRONT LOAD BINS (1.5m TO 4.5m)
- * JUMBO SKIPS (9m)
- * SUPA SKIPS (6m)
- * LOW SKIPS (4m)
- * 4 x 4 BINS (1.8m)

INGRAM'S Locally owned & operated
Hawera - Stratford - Opunake PH: 06 278 4786

AEA STAINLESS Jetter Tubs

Opunake Service Station
111a Tasman Street, Opunake

WE ARE HERE

**from The odd Bolts Box,
repair, replace, rebuild mild and stainless steels,
bolts, pins, bushes, washers or start from scratch!**
Concrete cutting, yard galvanised pole repairs and
same day service!

111A TASMAN ST, OPUNAKE
PH: 06 761 8834

Promote your events in the
OPUNAKE & COASTAL
NEWS

LOVE YOUR HEARING [again]



Lisa Keen brings over 20 years of hearing healthcare experience to Opunake for regular hearing clinics.

Wednesdays by appointment at CoastalCare, Napier Street

FREE hearing screening tests | ACC claims | Tinnitus
Custom noise protection | Superior hearing aids
Subsidies and funding available

Call 0800 555 676 today
appointments are limited



Opunake | New Plymouth | Inglewood



COMMUNITY COMMENT



Maree Liddington

Kerbside rubbish and recycling collection has come into the spot light in Eltham in the last few weeks with businesses and groups receiving a letter from the Council informing them that their roadside collection will cease from July 1, 2016. From that date all businesses

and non profit groups will have to arrange their own kerbside collection. This includes schools, churches, service groups, and maraes.

Understandably this has come as a shock to all. When and how did this decision come about?

What has happened to Council's, often voiced policy to encourage local business and local development?

These and many other questions were asked at this week's Eltham Business Association meeting.

In attendance was Herbert

Denton, operations manager for South Taranaki District Council, who sought to provide some of the answers. Apparently, the Kerbside collection contract of 2006, provided collection for residential properties only, but historically this has included businesses and non profit groups. Now with a new service provider, the Council seeks to rectify this anomaly and discontinue this collection.

I got the feeling that this explanation did not satisfy the 12 people in attendance at the

meeting, representing local business and service groups in Eltham.

All wish to continue the present system with one kerbside collector. It is a system that is working well, in most cases, and now provides a good opportunity for efficient recycling collection.

Local businesses here are into recycling. We have a lot of industry in Eltham. There is a lot of trade waste that can be recycled, and does in the present system. The question is, will other collectors

provide this service?

Discussion has ranged back and forth, but finally the Eltham Business Association decided to write to Council voicing their concerns and emphasising the following:

Non profit groups and organisations should be included in the residential collection.

We support recycling and wish to continue it.

We don't expect a free service, but a service that is a reasonable cost, clean and efficient.

Too many different

collectors cause congestion and more traffic problems for Eltham.

Can STDC re-look at this decision and its implications for small businesses?

At the end of the day, the lack of consultation on this issue is what has caused most angst.

If reasons are given at the outset and discussion held, many communication breakdowns between Council and communities could be avoided.

Maree Liddington
Eltham Community Board

Businesses urged to lead the way on road safety

Taranaki businesses are being encouraged to lead the way on road safety among their staff.

The Road Safety Workplace Charter was launched on March 31.

Developed by road safety professionals from Roadsafetaranaki, New Plymouth District Council, New Plymouth InjurySafe and the New Zealand Police, the charter has self-assessment standards to help businesses improve

the safety of their workforce when in vehicles.

"Our goal is zero fatalities on Taranaki roads and a reduction in crashes," says Mayor Andrew Judd.

"It's a big goal as there were 119 deaths and 653 serious injuries on our roads between

2004 and 2014, so we all need to take an active part in road safety if we're to cut these numbers down."

Stratford Deputy Mayor Alan Jamieson says Taranaki has a high number of fleet vehicles on the roads.

"That gives businesses a

big opportunity to improve the region's road crash statistics by improving driver behaviour.

"What people learn in the workplace, they also take home with them so the ripple effect of safe driving habits could be substantial."

Says South Taranaki Mayor Ross Dunlop: "The charter is a very practical tool. Businesses can use it to identify where they're doing well with road safety, and any areas where they need to improve, and it has a lot of useful advice, such as how to eliminate

driving distractions, promote courteous driving, and analyse the current driving behaviour of their staff.

"We're encouraging all businesses to take a leadership role in road safety by signing up to this charter."

How dangerous are P contaminated homes

Costly clean-ups for 'P'-contaminated homes have been grabbing headlines, but what are the real risks facing a family moving in?

Housing New Zealand has released figures showing the number of state houses testing positive for methamphetamine contamination (from use or manufacturing) is increasing. There have also been a number of media reports of other homes discovered to be ex-meth labs, leading to calls for increased protection for home buyers.

Dr Leo Schep, Toxicologist, National Poisons Centre, comments: "When addressing problems associated with contaminated houses, we are dealing with two separate issues: a house where someone smoked methamphetamine, or a house that was used to manufacture methamphetamine. "People living in a laboratory environment risk suffering

adverse cardiovascular, respiratory and dermal effects following the exposure to organic solvents, acids, alkalis and other chemicals. "However, people dwelling in a house where previous tenants had smoked methamphetamine, and there is some evidence of low concentrations on surfaces, have minimal risks of toxicity. "The risks would be similar for people who live in a house that had previous dwellers who smoked cigarettes or marijuana. They will have exposure to these drugs but the concentrations will not be sufficiently high enough to cause either psychoactive or toxic effects to people who may have had inadvertent, and brief, dermal contact with these surfaces."

Dr Nick Kim, Senior Lecturer in Applied Environmental Chemistry, School of Public Health, Massey University, comments:

"From an industry outsider perspective it has been interesting to see almost all of the focus on removal of the methamphetamine residues themselves. "I don't disagree with most of that, but a wider reading of the Ministry of Health's guidelines for the remediation of methamphetamine lab sites should indicate that there are at least complementary risks around the types of other chemicals that were used in the manufacturing process. "These chemicals vary depending on the 'cooking' process, so it is not safe to generalise, but a list of common known chemicals includes: hydrogen chloride, lead, iodine, mercury and volatile organic compounds. These organic solvents can include acetone, toluene, pyridine, ether, alcohols (methanol, isopropylalcohol), acetic anhydride, and others. "Some of these are not particularly exotic. Acetone is commonly used in nail polish remover, and toluene is a component of petrol. Pyridine is less commonly encountered but more toxic. Ethers are so volatile that they tend not to persist."

"To have a risk to people, we need an exposure pathway. Where there is no exposure pathway, there is no risk. "For people living inside residential houses, the main potential exposure pathways are inhalation, and either absorption through the skin; or transfer to the mouth. Skin absorption is almost always a minor and secondary exposure pathway, because the skin (unlike the lungs) is designed to oper-

ate as a barrier. However, skin absorption is the main exposure pathway for methamphetamine residues. Breathing is the main exposure pathway for solvents. "Once solvents are absorbed by soft furnishings and wall boards they gradually will re-volatilize back out into the air and be inhaled. Although some of these are solvents that we are occasionally exposed to (e.g. nail polish remover) we generally don't want children or adults to be breathing them for extended periods, even at low concentrations. "A key priority in site remediation should therefore be to ensure that residual concentrations of solvents in the air are below relevant guideline levels or non-detectable. This can start with removing and replacing soft furnishings and keeping doors and windows open for an extended period, but in

severe cases might require removal and replacement of the wallboards or perhaps material inside the ceiling cavity

"That leaves the question of how high could methamphetamine residues on surfaces could get before they were no longer at a safe level? I personally don't think it is (or will ever be) possible to accurately specify that, for several reasons, including being unable to predict the frequency of hand washing or how much wall someone's bare skin will come into contact with.

"For these reasons my own view would be that calls to specify a higher "no longer safe" level of methamphetamine are calls for something that is technically unachievable. However, I am reasonably confident that if the guidelines are met, then any exposure would be negligible."

Mountain Theme for Kaponga WI AGM

Paintings and photos of Mt Egmont/Taranaki were on display for the Mountain Theme at the March AGM of Kaponga WI.

A visitor, Joanne Ellis was welcomed, and hostess Sharyn Hurley read the thought, "Life is like a mountain, sometimes calm and sometimes stormy, but still it has beauty"

Everyone answered the roll call, "What does the Mountain mean to you?"

Members gave the Secretary their planned programmes for the coming year's activities.

Both the President Fiona

Collins, and the Treasurer Rayleen McDonald were thanked for their work over the past six years, and presented with a gift in appreciation.

Officers elected for 2016-17, President: Dorothy Hughes, Secretary: Gillian Frandsen, Treasurer: Sharyn Hurley. Vice President: Margaret Broomhall. Committee: F.Collins, J.Jones, M.Nicholas, D.West

To conclude the day, members received Easter Eggs, organised by Rayleen.

Fiona Collins

ALUMINIUM JOINERY

Rylock

- Windows
- Bi-Folds
- Sliding Doors
- Entrance Doors
- Conservatories
- Garage Doors
- Inserts/Retro Fitting
- Double Glazing Existing Joinery
- Maintenance

Call today for a free measure and quote

IN YOUR AREA EVERY WEEK

Ph: (06) 758 8073

Fax (06) 758 4157

email: sales@rylocknp.co.nz

Web: www.rylock.co.nz

LAWYERS

OPUNAKE LAWYERS Thomson O'Neil & Co.

Our Opunake Office is attended by:

Robert England on Wednesday & Fridays for buying and selling houses, farms & businesses; trusts, wills and estates.

Neal Harding on Thursday, for residential sales and purchases, family, district & criminal court matters, civil & business matters.

Stephaine Coulter on Tuesdays for employment matters, house purchasing and selling, refinancing and wills.

FOR ALL YOUR LEGAL REQUIREMENTS

30 TASMAN ST, OPUNAKE

PH: 761 8823

Getting on their bikes for a good cause

Recent rain meant the Opunake Lions Mountain to Sea cross country Mountain Bike Ride was less than the planned 40km in length, but organisers are pleased with how the event went.

Officially there were 249 entries for the ride, which was held on Easter Monday.

"We won't know the profit until next month when all the accounts are in but it will be substantial so the Fire Brigade should be pretty happy," Ian Armstrong of the Opunake Lions Club said.

While the event was promoted as a Fun Ride, there was a race option for more competitive runners with cups for the fastest male and female riders. The fastest male was Darry Stevens at 1 hour 21 minutes, and the fastest female was Louisa Webber at 1 hour 38 minutes.

The distance was 38.4 kms. It was to have been closer to 40 kms, but in two areas recent rain meant the route had to be changed.



The recent Opunake Lions Mountain to Sea cross country was well attended.



May is Pink Ribbon Breakfast month

Registrations are now open for Pink Ribbon Breakfast, with celebrity cook and author Chelsea Winter encouraging Kiwis to invite their friends to breakfast in May, to raise funds for the NZ Breast Cancer Foundation.

Proceeds from this year's Pink Ribbon Breakfasts will go towards breast cancer research, with a focus on support for clinical trials, immunotherapies, preventing the spread of cancer, improving clinical practice for better patient outcomes, and treatments for advanced breast cancer.

Chelsea Winter said she is honoured to be fronting the 2016 Pink Ribbon Breakfast Campaign.

"Food, friends and fundraising for a good cause, what's not to love?" she said. "It's amazing to be promoting awareness for what is such a fantastic initiative on many levels. A great many of my fans have been involved in previous years' breakfasts using my recipes - and I'm glad I can do more to help. I encourage everyone to get involved and host a breakfast."

Evangelia Henderson, chief executive at the NZ Breast Cancer Foundation (NZBCF) said the funds raised will help make up for the shortfall available for research in New Zealand.

"We have top-notch researchers working in the hottest areas of cancer research, such as vaccines and immu-



Chelsea Winter

notherapy, but often there's simply not enough money to take their work forward to a stage where patients can benefit."

With more than 600 women a year dying of breast cancer, the NZBCF helps fund clinical trials that can give patients access to otherwise unaffordable treatments, studies into making better use of existing drugs, and the development of new medicines here in New Zealand.

The NZBCF also funds breast cancer patient registers in Auckland, Waikato, Wellington and Christchurch, tracking patient treatment and outcomes to monitor treatment effectiveness and identify inequalities of access or care.

"Last year, supporters held 2600 Pink Ribbon Breakfasts

around the country, attended by 65,000 people and raising over a million dollars," said Evangelia Henderson. "We want Kiwi women to have the best possible treatment, and research is a huge part of that. So, please, host a breakfast - your help will make a real difference."

More than 3000 women a year are diagnosed with breast cancer in NZ, and 90-95 per cent of women who are diagnosed with breast cancer have no family history of the disease

Around 350 NZ women under the age of 45 (when free mammograms start) will be diagnosed with breast cancer this year.

While breast cancer has a good cure rate when found early, many women have their cancer come back. Only

73 per cent will be disease-free 10 years after diagnosis

More than 600 women will die of breast cancer this year.

The New Zealand Breast Cancer Foundation recommends women consider having yearly breast screening mammograms at age 40-49 years of age, then screen every two years from age 50.

Chelsea Winter

"Let's create your business growth strategy together"
Your only local community accounting firm



Accounting for the future, today

Hawera - Opunake - 06 278 4169

OPUNAKE OFFICE

OPEN EVERY WEDNESDAY FROM 10am TO 3.30pm



MOTUROA LOCKSMITHS

For your
Lock Repairs
New Installs
Key Cuts
Car Lockouts

Farmers, Townies or Industrial!

491 St Aubyn St, Moturoa, New Plymouth

Phone: 06-751 0900

www.thelocksmith.co.nz



We welcome your contributions

Please send to

editorial

@opunakecoastalnews.co.nz

Promote your events in the

OPUNAKE & COASTAL
NEWS

PHL

Precision Helicopters Limited
Precise in nature, action & performance

www.precisionhelicopters.com Free Phone:
0800 246 359
Nationwide

For all your helicopter requirements:

- Granular and liquid fertiliser
- Boom and spot spraying
- Fine Particle Suspension
- Wild animal control
- Mustering
- Lifting
- Hunting Trips
- Scenic Flights

Opunake Volunteer Fire Brigade News

We answered a call to Pickering Motors on Sunday 20th when the private alarm decided to cause a little excitement. For some unknown reason it went off and we were dispatched to check it out. Luckily we didn't end up with a Smith Brothers result and everything was fine.

The big wind on Thursday got us out of bed early to pull a few trees and debris from the Eltham Road. Luckily a local farmer followed us along the road with a chainsaw on the tray of his ute and cut the trees into manageable pieces for us. We ended up near the intersection of the Awatuna and Auroa Roads, where we helped the Kaponga brigade deal to a good sized tree that had toppled and had taken a



The new footpath in front of the fire station is still being developed.

power wire with it. Once we were sure the power wire was safe, (although still across the road), we headed for home.

In the early hours of Sunday 3rd, we were called to a cardiac arrested patient on the Namu Road. Our crew tried

extremely hard to revive the gentlemen, but sadly we were unsuccessful. Our heartfelt thoughts and prayers go out

to Rae, her family and friends at this sad occasion.

The new footpath in front of the fire station is still being

developed and I can't wait to see the parking layout. We are extremely disappointed in the way the kerbing has been done as we feel we will lose too many parking spaces. We feel that the kerb should have been as per household entranceway, so we still could park right up to our fence line. However we have been assured that we won't lose any parks, so we will have to wait and see. If you have a spare moment when you are up town, drive around to the fire station on King Street and have a look. You will see not only the extremely wide footpath, but also that it stops at the edge of our boundary and doesn't meet up with the Havelock street path.

The Fiery Footpath

OKATO COP

"Hi Everyone

As the weather changes towards winter it is a timely reminder to watch how we drive on our roads. The road conditions change with the

weather and it is around this time that we usually have an increase of accidents on the roads. Out of all the accidents that have occurred over the last few months a large majority have been on the Taramaika corners. All of these accidents have involved an element of wet weather and a changing in the road conditions. One noticeable thing from all of these is the fact that every single one that I have attended has been a local or someone who drives the road every day. I can just about write down what excuses the driver will give me before I get there. "I drive this road every day," "No, I wasn't speeding," "all of a sudden the car started sliding for no reason." Complacency is likely the number 1 reason that we are having accidents on this stretch of road. To be



Constable Rhys Connell

fair the road surface is not the best, and I have chased up the roading authorities in regards to this, but we all know its dangers and we have to treat it with respect. It has only been luck that these have only been one vehicle accidents and hasn't involved another car coming the other way.

Over the last month or so there had been a spate of damage (letterboxes and graffiti) being broken in Oakura. Please call 111 at the time if

you see these sorts of things happening. It is a lot harder to investigate these offences several days after it has happened and very rarely we will have any luck. Locals have said to me that it is only a few letterboxes so we didn't want to trouble the police with that. Breaking letterboxes from bored teenagers leads to breaking into cars and houses so we'd rather nip it in the bud when we can. We have dog handlers sitting in New Plymouth who just love to chase these young fellas around with their unfriendly dogs. They do a lot of training for serious incidents and can use jobs like this to not only catch offenders, but to test their dogs in a real life

situation that training can't provide. With school holidays not far away please keep this in mind

Quite often people will hand in lost property to me that they find. I have had a set of keys handed into me that were found on the road between the Stoney Hotel and the old Dairy factory. They are on an old 'macpac' carabiner and look like it has a Honda motorbike key and a car key on it. Come and see me if you think it may be yours. You'll have to pass a quick test on what they look like before I hand them over!

I am on a rural security committee which meets once a month in Stratford and involves police, community

and rural stakeholders. A lot is discussed around farm security and there still is Taranaki-wide issues regarding thefts of petrol and machinery/tools from sheds. There has also been issues with disgruntled staff damaging property or coming back to steal items. Consider things such as changing locks on the houses and sheds if you believe this could be an issue for you coming into the changing of the seasons and continue to be vigilant with locking your stuff away. Please call me at the Okato Police Station if you'd like advice in regards to this.

Have a great week.

Rhys

IHAIA MOTORS

for

A GRADE REPAIRS

- Tyres
- Batteries
- Lubes
- W.O.F
- Panel beating
- Painting
- Farm Bikes
- LPG
- All mechanical repairs
- Insurance work
- Radar Detectors

AT COMPETITIVE PRICES.

Tasman St, Opunake
Ph (06) 761-8502

View By Private Inspection



PRIDE OF PLACE

3A Pipitea Place, Whalers Gate

Offers Over \$619,000

- Open plan lounge/family/dining areas
- Great flow to outdoor living
- Stunning kitchen with walk in pantry
- Three double bedrooms and office or fourth bedroom
- Two bathrooms – master with walk in robe
- Garden shed – landscaped grounds

JENNYBROOKING AREINZ

ATRUSTED Name in Real Estate

p: 0274 444 901

e: jenny@urbanstudio.co.nz

urbanstudio.co.nz ID# USP694285
open2view.co.nz ID# 362868

UrbanStudio
PROPERTIES LIMITED

urbanstudio.co.nz

Licensed Real Estate
Agent REAA 2008

MPI imposes tough restrictions on imported seed

The Ministry for Primary Industries has imposed tough new border restrictions to stop contaminated seed from entering New Zealand.

The move follows the discovery of velvet leaf in fodder beet seeds imported from Europe. MPI, industry bodies and regional councils are currently responding to an outbreak of the invasive weed in farm properties across the country.

"We already have strong border controls in place to stop contaminated seed from entering New Zealand. The new interim measures will provide another layer of biosecurity until we know exactly how the contaminated fodder

beet seeds entered the country," says Stephen Butcher, MPI Manager Import and Export Plants.

The new, strengthened interim measures include an import ban on all fodder beet seed lines known to be contaminated with velvetleaf. Before all other fodder beet seed can be released at the border, there will have to be a sign-off by one of MPI's two chief technical officers. All pelleted seed imports (not just fodder beet) will be subjected to laboratory testing for contaminants, rather than solely using visual inspection by quarantine officers.

"The measures will result in the increased scrutiny of seed imports. And they will ensure

this scrutiny takes place at the highest level of MPI, based on specialist advice," says Mr Butcher.

MPI will also visit fodder beet-growing regions in Europe during the coming growing season to inform future decisions about New Zealand import requirements.

"We want to review the certification systems that countries use to assure New Zealand that imported seed is free of contaminants," says Mr Butcher.

He says that permanent changes to New Zealand's seed importing requirements will be introduced following further investigation of the velvetleaf outbreak and consultation with industry.

Our first flag

On March 20, 1834 British resident James Busby met Maori chiefs to design a flag for the United Tribes of New Zealand. This became the

'de facto' flag for the country until the signing of the Treaty of Waitangi in 1840.

This meeting had been prompted by the seizure of an unregistered NZ ship and

Busby thought that a national flag would prevent such incidents happening in the future.

Several designs were sent from Sydney and the chiefs voted for their preference.

2016 Taranaki Rose of Tralee Selection - Congratulations to Claire Richardson

The 38th Taranaki Rose of Tralee Selection was held last Saturday night April 2 at the Plymouth Hotel Ballroom in New Plymouth.

Congratulations to Claire Richardson, a 24-year-old Medical Student at Otago University in Wellington, who was crowned the Taranaki Rose of Tralee for 2016. She is the daughter of Kevin and Marian Richardson from Tataraimaka near Okato and granddaughter of former Taranaki Irish Club President Patrick and Bernadette Crowley.

Over 120 Club members, family, friends and supporters attended the Saturday night function, and were treated to a fabulous night of entertainment, with many commenting that "it was the best one yet." The night began with the introduction of the four Rose Entrants for 2016, Claire Richardson, Briana Matthews, Emily Shirlcliffe, Nicole Murray, and the 2015 Taranaki Rose Antonia Smith along with their Escorts. Taranaki Irish Club President and Rose of Tralee Organiser Louise Buhler welcomed everyone on behalf of the Club. The Taranaki Irish Dancers group performed a number of traditional Irish dances both in soft and hard shoe by 11 young dancers from New Plymouth and Mokau. Live Band Campbell Vibe provided background music during a delicious three course dinner, and a lively playlist of favourites throughout the rest of the evening until the early hours. Theatre Lamp and Lighting were on hand to provide technical support for sound and the projector screen. The Ballroom was beautifully decorated and the Plymouth



Claire Richardson

Hotel staff ensured the night ran smoothly. Raffles of Roses chocolates, donated by the Julian family, were drawn throughout the night. The Tullamore Dew Irish Whiskey was won by the Escorts and the Plymouth Hotel Orangey Restaurant, meal voucher was won by one of the Roses grandfather, Charles Matthews.

Just after 8.30pm and as part of the judging process, the onstage Rose interviews with MC Peter McDonald began. In addition to their interviews the Rose contestants also performed a party piece each, involving crowd participation, which was one

of the highlights of the night. After the judges deliberated the Taranaki Rose winner for 2016 was announced.

On the judging panel this year we welcomed the 1983 Taranaki Rose Breeda Hawkes, Community Hospice Nurse, Eltham, Lois Finderup, Turning Point Professional Image, Modelling, Talent Agency, New Plymouth and the 2008 Taranaki Rose Sonia

Kiser, Sales and Marketing Manager from Carac Group, Eltham and NZ Rose of Tralee Trophy Sponsor.

Judging criteria for the Rose of Tralee is based on personality, confidence, communication skills, character & charisma, aptitude, presentation and overall suitability for the role of a Rose. The contest is based on the Irish love story of Mary O'Connor and William Mulchinock and the song he wrote for her. The winning Rose is an ambassador for the Irish community and the contest throughout the year.

The Roses each have a Rose escort, and this year three of them were from overseas, two from County Tyrone in

Continued on page 8



PHONE 06 757 9710 - www.petalandprickle.co.nz

Congratulations to all who participated in this great event
from John Burling and Staff



Excellence in Engineering

53-63 Bridge Street, Eltham
Ph: 06 764 8254 - 06 764 8253



Event & Party Hire for all occasions

TLL Events have solutions for any event from lighting, sound, audio visual, staging, exhibition panels, tables & chairs, Décor & design to full production & much more!

Ph: 06 758 2875

Email: michael@tll.events

Website: www.tll.events

Sandford Bros Ltd & Spreading Sandford Ltd

Phone Auroa - 06 274 5852
2118 Skeet Road, Hawera
Toll Free 0508 726 336



Sandford Livestock Ltd
Phone Hawera - 06 278 0045
189 Fairfield Road, Hawera
Phone Waitara - 06 754 8069
101 Mould Street, Waitara
Toll Free 0800 707 404

We deliver for ALL suppliers of PKE

Proud to support this event!

No GIMMICKS
JUST GREAT PRICING

DELIVERING PKE
TO THE COAST
FOR OVER
TEN YEARS

CALL US NOW FOR
COMPETITIVE
PRICING



Rural & General Cartage
Specialising in:
* Palm Kernel
* Aggregate
* Fertiliser
* Bale Cartage

Livestock Cartage
Depots in:
* Okato
* Hawera
* Auroa
* Waitara

Ready Mix Concrete
Depots in:
* Hawera
* Wiremu

Ground Spreading
* Spreadmark Certified
* 4WD Trucks
* GPS Proof of Placement



Proud to support the

Rose of Tralee event



QUALITY HOTEL
PLYMOUTH INTERNATIONAL

Freephone: 0800800597
Website: www.plymouth.co.nz

Supporting jobs and growth

Building a strong economy that creates more jobs remains front and centre of the National-led Government's agenda.

Under National's programme of responsible economic management, we have seen more jobs and higher incomes for New Zealand families.

There were 175,000 more jobs in the last three years – and unemployment has fallen

to 5.3 per cent, though we want to see it reduce further. We also expect more than 148,000 additional jobs to be created in the next three years.

Expected employment growth in Taranaki for 2016 – 2019 is 2.3 per cent a year, which is above the average for the country. This is positive news for our region.

Average annual wages are \$11,000 higher than when we came into office. They're now



Jonathan Young MP for New Plymouth

almost \$58,000, and expected to top \$63,000 by 2020.

In the last year alone wages are up 3.1 per cent against

inflation of just 0.1 per cent – meaning a real lift in the spending power of New Zealand households.

We frequently hear Opposition parties calling for the Government to magic up more jobs.

Actually, the Government doesn't create jobs – businesses do that. And this Government has taken many steps to help businesses do just that.

Here's a few: We've reduced tax to encourage more jobs and increase take-home pay. We've introduced 90-day trials to encourage

businesses to hire new staff. We've controlled government spending, which is helping keep pressure off interest rates. And we've signed New Zealand's biggest trade deal – the Trans-Pacific Partnership – to support more jobs and diversify the economy. These are all things Labour has opposed.

We're also supporting employment through a range of skills initiatives, such as Maori and Pasifika Trades Training, ICT Graduate Schools, Trades Academies, a focus on more engineering, ICT and science graduates, and increased access to workplace literacy and numeracy training.

Our economy, which grew

2.3 per cent in the last year, is also supporting changes that kick in on 1 April.

More paid parental leave, stronger work expectations for beneficiary parents, and the first non-inflation increase to benefits in 43 years are part of a raft of measures that came into force to help families get ahead on April 1.

Working for Families, the minimum wage, and New Zealand Superannuation also increased on April 1, and ACC levies will be further reduced.

These changes show that all New Zealanders continue to benefit from our strong, growing economy and the National-led Government's responsible programme.

Chester Borrows MP FOR WHANGANUI

HAVE AN ISSUE OR NEED TO SPEAK TO YOUR MP?

Please email or phone to book a time to speak with Chester.



Hawera Office
11 Victoria Street
Ph: 06 278 4059
chester.hawera@parliament.govt.nz

National
www.national.org.nz



Adrian Rurawhe MP for Te Tai Hauāuru



Labour Taranaki Office
21 Northgate
Strandon
New Plymouth

Office hours:
10am – 2pm
Monday to Friday
3 – 7pm Thursday

labour.taranaki@parliament.govt.nz
06 757 5662 | 0800 ADRIAN

Authorised by Adrian Rurawhe,
Parliament Buildings,
Wellington



Labour

Andrew Little Labour Leader



Labour Taranaki Office
21 Northgate
Strandon
New Plymouth

Office hours:
10am – 2pm
Monday to Friday
3 – 7pm Thursday

labour.taranaki@parliament.govt.nz
06 757 5662

Authorised by Andrew Little,
Parliament Buildings,
Wellington



Labour

Centralising food for hospitals a mistake



Andrew Little MP, Leader of the Opposition

Remember the joke about frozen TV dinners? The one which said you were better off eating the box rather than the actual contents?

There's a similar one doing the rounds these days – but instead of TV dinners, it's hospital food.

Slops, dog food, mush...

all words used to describe what patients in some of our biggest hospitals are being dished up at mealtimes as food services are centralised and fall under the auspices of catering giant Compass Group.

The move follows the Government's drive to cut costs – it has slashed \$1.7 billion from the Health budget – and was initiated by the now defunct Health Benefits Limited.

HBL was wound up last year after failing to make the savings it was supposed to, instead costing tens of millions in DHB funding which could have gone to health services.

The centralisation sees food bought, prepared and chilled or frozen in Auckland or Tauranga before being distributed to the various DHBs.

Local jobs have been lost, and local providers of meat, fruit, and vegetables, and other services, have had their contracts cancelled.

The regime has already been rolled out in Auckland, Counties Manukau, Waitemata, Southern, Tairāwhiti, Bay of Plenty and Nelson Marlborough DHBs, while Wairarapa, Taranaki, Lakes, Hutt Valley, Capital and Coast, West Coast, and Canterbury are still considering whether to outsource or not.

Northland, Hawke's Bay, Whanganui, MidCentral, and South Canterbury have voted to continue using their own in-house kitchens.

While no-one expects Michelin, or even five-star dining, hospital patients do need nutritious, nourishing food. They are in hospital for a reason.

Concerns about food quality were raised early on, with nutrition experts warning that cost-cutting could lead to malnutrition or even death. Long-term DHBs would be paying a larger price given poor food intake was associated with longer hospital stays and more frequent readmissions.

But the Government pushed ahead with the plan and it's now come home to bite them on the proverbial.

Patients and their families have taken to posting photographs of unappetising meals on social media, claiming its "inedible," "unrecognisable," and "not fit for animals."

Challenged by Annette King to actually eat one Jonathan Coleman accepted, then

Continued page 9

2016 Taranaki Rose of Tralee Selection -

Congratulations to Claire Richardson

Continued from page 7

Ireland. While working for a local farming contractor, they saw the event advertised on a road sign and enquired as to how they could be involved. With the contest being based on a love story, the question of romance and some match making between a Rose and their Escort is always talked about.

Prior to the final selection each Rose entrant attended a private individual interview

with the judges, and were guests of the Hawera Harness Racing Club's Easter meeting. President John Hosie introduced the Roses to the crowd in front of the members stand.

The winner received gifts from the Taranaki Irish Club, sash, crown and cup, flowers by Petal & Prickle and a return trip to the National final. Josie Hogan Club foundation member and previous Rose of Tralee organiser sponsors a gift for the winner each year. Special thank you goes to

the sponsors of the evening, Taranaki Rose of Tralee Supporters Group, McDonald Real Estate, Ravensdown, Sandfords, D4, Mondo Man, Gopperth Contracting, North Fuels, Kiser Civil Ltd, and Life Pharmacy, as without them this night would not be possible. Photos can be view on the Clubs facebook page "Taranaki Irish Club."

Claire will now travel to Queenstown and Invercargill for the National final in June. Taranaki is the first of the regions to select their Rose,

and over the next six weeks Auckland, Hutt Valley, Wellington, Christchurch, Southland and Otago will select theirs. The National winner will travel to Ireland in August for the International Festival where 68 Roses from around the world will meet in Dublin, embark on a tour of Ireland before arriving in Tralee for the week-long festival and International Rose selection. This year there will be an additional night of live interviews on RTE live television, which is viewed by over 1.7 million people each year.

Next year the Taranaki Irish Social Club will be celebrating 50 years, and over the coming year, will be gathering articles of history, stories, photographs and biographies to collate in to a photo book. Everyone is invited to contribute if they have any souvenirs, memorabilia, newspaper clippings, photos, from over the years. Celebrations are planned to combine with the 2017 Taranaki Rose Selection and if Claire is successful at the National final, then the Taranaki Irish Club will have a busy year ahead indeed.

POWERWORX

Power Supply Rural & Residential

Design, upgrade and repair overhead and underground power supplies

- Powerco Approved
- Underbores - wires and pipes
- Powerline maintenance
- Fault repair
- Subdivision power installation
- Vegetation control around powerlines
- Network connections
- Transformer & line upgrades
- Specialists in rural power servicing and installation

0800 877 746

Taranaki Region
Contact Bruce Wilson Manager
58 Glover Road, Hawera Ph: 06 278 4514
Email: powerworx@obertech.co.nz

RSA delighted at referendum result

Centralising food for hospitals a mistake

Continued from page 8

immediately barred media from being present. His response? It was “yummy.” Really Minister?

Ironically the very same DHBs who have signed up with Compass have been spearheading a move to healthier food being served in cafes and in vending machines, while all 20 now ban soft drinks.

We wouldn't want our schools feeding our kids meals that are made from the cheapest possible ingredients, prepared hundreds of kilometres away, and “regenerated.”

As Greek physician Hippocrates said, many, many moons ago, “let food be thy medicine and medicine be thy food.”

It should be elementary that hospitals provide patients nourishing, healthy food.

The Returned and Services' Association (RSA) is delighted, but not surprised, at the outcome of the second flag referendum.

Over 2,119,953 people voted, with 1,200,003 (56.6%) people voting to retain the current New Zealand flag.

The result shows New Zealanders want to retain the current flag, RSA National President BJ Clark said.

“We're glad so many New Zealanders heeded the RSA's call and made their voices heard for the second referendum – it was an inspiring, strong show of democracy in action.

“New Zealand service personnel sign up for a number of reasons, but one of the foremost of these is to safeguard the continuing of our way of life.

“It's heartening so many Kiwis have exercised their right to have their say, and keep the flag. The people have spoken.”

Clark said that one of the key strengths of our flag is the history we have created under it, and that he looked forward to New Zealanders creating more history under this flag in the future.

With the conclusive completion of the two referenda, and numerous public discussions, it was now time for the country to focus on other important issues, Clark said.

“There are some significant lessons to be learned from a thorough examination of this process, but that is not for us to get involved in. However, we will be watching closely to see what comes out of this.”


“With this all done, we can get back to the real business of supporting our current and former service personnel deal with the impact of their service for New Zealand and remembering the service and sacrifices that have been, and continue to be made, by our people,” he said.



No marks for guessing which flag this resident just south of Hawera supported. No fewer than 4 flags were spotted on the property.



RSA National President BJ Clark.



NEW ZEALAND PRESS COUNCIL

This newspaper is subject to NZ Press Council procedures. A complaint must first be directed in writing, within one month of publication, to the [editor's/website author's] email address. If not satisfied with the response, the complaint may be referred to the Press Council P O Box 10-879, The Terrace, Wellington 6143.

Or use the online complaint form at www.presscouncil.org.nz Please include copies of the article and all correspondence with the publication.

Inclusive process sees voters choose current NZ flag

The Electoral Commission has declared that following a significant turnout of 67.78 per cent, the current New Zealand flag has been chosen by voters in the final referendum.

The flag was determined by the binding postal referendum held between March 3-24, where voters were asked, “What is your choice for the New Zealand flag?” The current flag received 1,208,702 votes, with 921,876 votes for the alternative.

Flag Consideration Panel chair, Professor John Burrows, acknowledged that it has been a robust debate and millions of kiwis engaged in the conversation across New Zealand.

“Kiwis have had an opportunity to really consider what our flag means, what it represents to them, and for the first time in history, choose a flag.

We are a lucky nation in that we've had a democratic and inclusive process to think about it and make our own decision, and it's pleasing to see such a significant turnout for the referendum. Throughout this process people have had a

chance to learn more about our flag, its history and the events and achievements it represents, and it has been flown around the country in many more locations than ever before which I hope to see continue,” said Professor Burrows.

He said that this world-first process presented a unique opportunity for a significant conversation about nationhood and identity.

On behalf of the Flag Consideration Panel, Professor Burrows would like to thank everyone that participated in the engagement process, and in particular the 43,000 people that shared what they stand for, the over 6,000 people that visited the public seminars and information stands, the over 10,000 flag designs, and the over 1.75 million Kiwis that engaged online.

The Silver Fern flag has no official status, and the rights will be assigned back to the designer, so that any future use of the flag design will require permission from the designer. The same applies to the other alternative flags from the first referendum.



DEMOLITION SALE

BRIDGE BEAMS
ANGIE & CHANNEL IRON
NEW & USED ROOFING IRON
ROOF TRUSSES
ROOF SECTIONS
MISC STEEL/ROLLER DOORS

FOR VIEWING PHONE

ROSS 027 406 3669

STEVE 027 861 6358

Promote your events in the

Harnessing Hope

Take control of your life and master depression
By Jan Marsh

A simple, practical, effective guide for those experiencing depression

and those who care about them

South Island author, Jan Marsh, saw a gap in the market that needed to be filled.

"I found I was often going

over the fundamentals with each client and wanting to give them something to take away and refer to as a reminder," Jan says.

While former All Black and coach Sir John Kirwan has de-stigmatised the topic of depression and created awareness, her book *Harnessing Hope*, shows how simple lifestyle changes can make a difference in offering real hope for those suffering from depression.

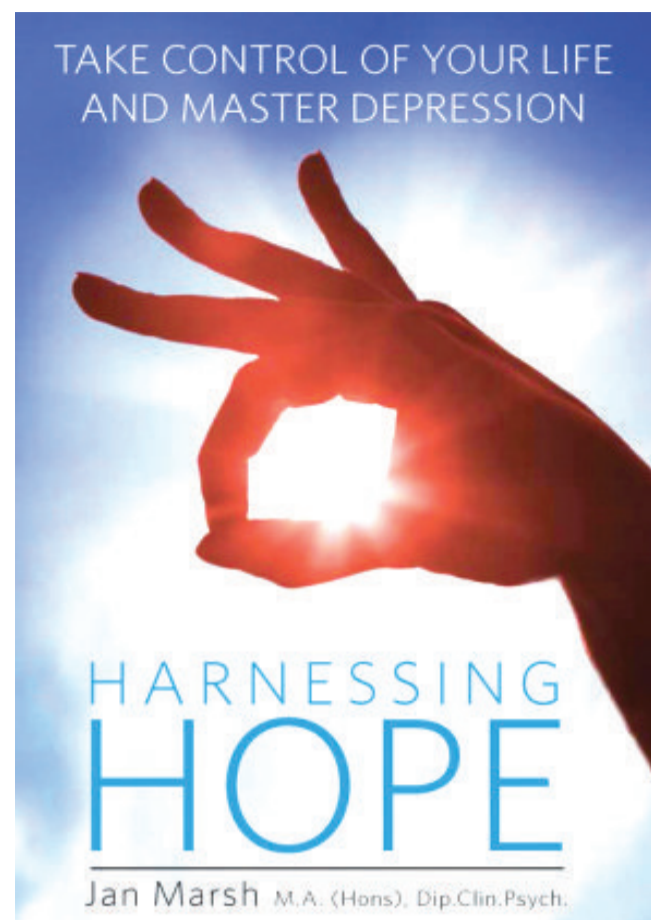
This small-format book answers two key questions: What is depression and what causes it? If I have depression, what can I do about it?

Jan takes a holistic approach, addressing mind, body and spirit through tips on physical wellbeing, insights into the habits and beliefs that shape our moods, and ways to keep sight of the bigger picture through mindfulness practices. She also explains how these strategies can be used

alongside other treatments to provide an empowering process that is tailored to each individual. Five case studies are tracked throughout the book, enabling the reader to see how each individual uses these tools to master depression and harness hope in their own lives. This is the ideal resource for people who are often feeling overwhelmed and unable to tackle lengthier, more complex material.

Harnessing Hope includes positive psychology methods, such as compassion-focused therapy and mindfulness.

Jan Marsh is a clinical psychologist with 40 years' experience, and lives in Nelson. She has worked with clients from all walks of life and is familiar with a wide range of effective treatments for depression. After many years of service in the public system, Jan has been in private practice for over a decade.



Harnessing Hope gives great advice by clinical psychologist Jan Marsh.

FREE QUOTE on your new Rotary Cowshed, phone or visit today!

See us for ALL your farm building requirements:
Cowsheds, maize and silage bunkers, feed lot pads, silage pits, concrete work, plus commercial joinery and houses.

Manufacturers of OCTA-LOCK
anywhere in New Zealand
Maize Pits, Feedpits **BOOK NOW**
Ready for Next Season

Fabish & Jackson (2010) Ltd
3 Kelly Street, Inglewood 4330
P: 06 756 8099
F: (06) 7568099
C: 0274 470 708
www.fabishjackson.co.nz

More people waiting for replacements

"There are more people wanting hip and knee joint replacements than can be

managed by District Health Boards (DHBs) despite the health target for elective surgery being met or exceeded by all but three of the 20 DHBs. The problem just won't go away." Sandra Kirby, Arthritis New Zealand Chief Executive says.

She was referring to a New Zealand Medical Journal article which said demand for hip and knee replacements was higher than DHBs could perform, and that patients are now more severely disabled than in 2006. "Incidence of osteoarthritis is increasing, and the age of diagnosis is dropping. This is resulting in people being

unable to work, or in some cases manage day to day activities such as bathing and dressing, causing additional financial burdens." "While we acknowledge the increase in hip and knee replacements for people with osteoarthritis under funding increases for elective surgery, the demand continues to outstrip the capacity of the DHBs. It seems like each week the media carries another person's experience of living with the crippling pain of arthritis having being turned down for publicly funded surgery"

"There is much that can be done to reduce the health burden of arthritis.

Programmes like tailored exercises, pain management, self management and physiotherapy have all been proven to help. We welcome the new Mobility Action teams which are based on this approach but note that seven pilot programmes will not meet this growing demand, and are not a quick fix solution. "Arthritis New Zealand has been delivering a variety of programmes across the country for many years, and every day it sees the benefits they bring to people who are living with arthritis. Investment in programmes like this generates a long term dividend in the form of a reduced health burden."

Previously
United Travel

you
travel

After 40 years the sun is setting on the United Travel brand in New Zealand. But it's not "Goodbye" from us as we're excited to introduce a bold new travel brand to the market, and we'll still be united by one thing - **YOU**. **YOU Travel** is not just our new name, it's a whole philosophy of delivering an unrivalled travel experience to **YOU** our customers.

SAME, SAME BUT DIFFERENT!

Same great staff, same excellent service, same location and phone numbers, different name.

We look forward to continuing to provide **YOU** with excellent service, great travel deals, and happy holidays

Pat, Clyde, Nicola, Glennys and Linnea

see us instore youtravel.co.nz
0800 447 474
06 764 7431

YOU Travel Eltham
66 Bridge Street, Eltham
@ info@youtravel.co.nz

S.O.S

Specialist Outdoor Services

call **027 605 8437**

31 King Street - Opunake



Specialist Outdoor Services include

Excavating now available

Demolition Work - Total Section Maintenance

Tree Maintenance - Earthwork - Firewood

Lawnmowing - Waterblasting - House Painting

Removal of Greenwaster/Inorganic

25 year experienced independent contractor
Taranaki owned

Contact: **DAVE 027 605 8437**

Events this Term...

- * Obstacle Course with Tui Ora and Sports Taranaki
- * Whanau night with Tui Ora
 - * Beach Visit
- * New Parents Afternoon Tea
 - * Wheels Week
 - * Americarna
- * Emergency Week
 - * St Patrick's Day
- * Meet the Teacher Evening
 - * Easter Party
- * 4 Years old Sleepover
 - * Library Visit
- * 20 years Kindergarten Celebration
 - * Middleton's Bay Clean up

Opunake Kindergarten



Children, families and teachers learning together

We have been busy this term at Opunake Communities Kindergarten learning about health and wellbeing through our involvement with the Oranga Mokopuna programme. Sports Taranaki came to visit and set up active movement stations for our children to try out and get their bodies moving. The different stations got children crawling, balancing, jumping and throwing balls and rings which are fundamental movements. The children have been using food grown from our garden to try out some new healthy recipes.

Our whānau night focused on nutrition for children with information and discussion about healthier food choices, portion sizes and deciphering food labels. The teachers have participated in professional development workshops at Kindy on active movement and inhibiting primitive reflexes and also attended a 'Train the Trainer' session. We are using what we have learned in our work with the children, incorporating it into our planning and curriculum.

Fun and easy things to try with your child:

- Spinning slowly (8 seconds to spin around once) is very good for aiding the vestibular system which is responsible for balance and equilibrium. Don't forget to unwind by spinning the other way.

- Bubble catching. Encourage children to track them with their eyes to increase eye fitness, then help them to pop the bubbles with different parts of their body which will help with body awareness and co-ordination.

- Stickers on body parts. Trace an outline of a body and pin on the wall. Ask children to jump across the room and put a sticker on the foot or crawl and put a sticker on the nose etc. This incorporates fundamental movements as well as body awareness.

Remember for tamariki (children) moving is learning!

MEET THE TEACHERS EVENING



Parents got the opportunity to have a discussion with the new entrant teachers from Auroa, Opunake, St Joseph's and Rahoitu Schools, to find out how they could prepare their child for school.

Top Tips for Lunch Boxes/Kai Pai



Involve your children in lunchbox decisions and preparation and be a role model - prepare your own healthy lunch at the same time Cut large (seasonal) fruit and vegetables into smaller pieces

- * Vary the shape of sandwiches: triangles or use a cookie cutter
- * Experiment with different breads, e.g. wraps, pita, fruit bread

- * Water and milk are the only drinks recommended for children
- * Freeze a drink bottle for the lunch box to keep food cold and safe
- * Keep it interesting...leftovers are great - or try sushi, corn thins, tuna or potato salad etc.
- * Make sure snacks come from the four food groups.

HEALTHY EATING WORKSHOP



Sue and Faye from Tui Ora speaking at our recent Whanau Night about healthy eating and portion sizes.

KINDERGARTEN IS CELEBRATING

20 Years of fun....



Come and join us for a

Combined Grandparents - Dress up - Open Day

Thursday 14th April 2016 - 11am - 1pm

DAYS AND SESSION TIMES:

Monday 9am - 3pm

Tuesday 9am - 3pm

Wednesday 9am - 3pm

Thursday 9am - 3pm

Friday 9am - 3pm

New enrolments are welcomed

Check us out on Facebook



Celebrating a school's 125th anniversary

Continued from page 1

around the region," he said. In his time at the school, the roll had fluctuated from as low as 86, to as high as 127. The school has pushed technology, and joined neighbouring schools in forming the Moa Cluster. Mr Downs said that when he started as principal the school had 30 laptops, and now has over a hundred devices. Pupils from Kaponga have punched above their weight academically and in sports, he said.

Ian Brewer entertained the audience with a talk on his memories of Kaponga. He described "an idyllic childhood," which included swimming in the river, and shooting rabbits with his "good mate" Dennis Cook.

He also spoke about the town's local identities including Noel Cran, who had the saddlery shop.

"More decisions were made in his shop on a Friday afternoon than were ever made by the town board," he said.

He recalled the headmaster Jim Bailey, the patriotic Northern Irishman who had everyone at school saluting the flag and singing God Save the King. When flags had served their purpose they were never burned, they were buried. Hence the large number of flags children would dig up in later years.

There was "Darkie" Melville, chief of the fire brigade, "whose word was law." He ran a seven aside rugby tournament which would attract players from around the North Island, including the great Bert Cooke, hero of the 1924 Invincibles which went unbeaten on its tour of Great Britain.

As well as other characters like local policeman Jack O'Donoghue, he also recalled the time the "Woman in Red," popularly

suspected of being a German spy visited Kaponga.

Kaponga has long been remembered for its contribution to rugby, and one of its former All Blacks Ian "Legs" Eliason was among those at the Jubilee. His rugby career which took him to 222 games for Taranaki and 19 for the All Blacks, began at Kaponga. He began playing for the school, then progressed through Taranaki Primary School rep teams, Kaponga Rugby Club and beyond. His provincial career included clashes with the great Colin "Pine Tree" Meads.

"The game's changed since then," he said. "The guys are faster and bigger, and the hits are a lot harder, and the game's played more for entertainment."

He has maintained his interest in Taranaki rugby, having served as President of the Taranaki Rugby Football Union, of which he is now patron.

Organising committee member Kaye Schuler who has worked at the school for 28 years said the celebrations were going well.

"We have had awesome comments, and so far no negative comments," she said. "Everyone is as happy as."

Hillary Law said there had been a good atmosphere which had carried over from the Meet and Greet the previous day.

"Hearing everyone talking has been fabulous. We have had people come from Tasmania and Brisbane and all over New Zealand. We have had people who are well into their 90s through to two or three year-olds."

School classrooms were open, giving visitors a chance to see 21st Century education in action, and schoolchildren conducted by Helen Duff entertained visitors with a number of



From left: Irene Walker with sister-in-law Barbara Brewer, brother Ian Brewer, and Dan Betts.

songs.

After the speeches and the cutting of the jubilee cake, Sharyn Hurley (nee Thurston), Lynne Watts and Hillary Law, representing three longstanding Kaponga families laid a wreath to remember the fallen. The time capsule buried at the time of the school's 1991 centenary was brought up, and another which includes contributions from the school's current roll of pupils will be deposited at a later date.

Two hundred and five people registered for the dinner held on Saturday night. The following day there was a service at the Kaponga Town Hall, which included a mixture of Easter reflection and celebration of the town. Pupils from Kaponga School again entertained with a bracket

Continued page 13



Cutting the cake. Maddi Butler and Ella Krutz.



Bringing up the time capsule. Robyn Hughes and Pam Whalley.



Laying the wreath. From left: Sharyn Hurley, Lynne Watts, Hillary Law.

under the mountain

Continued

of songs, as did Words with the Birds, the talented trio known for reviving the popularity of the Andrews Sisters.

The final official part of the celebrations was Sunday's parade, which made its way along Egmont Street to the school. Led by a pipe band there was a good mix of floats, vintage cars and salutes to families with long connections to the town, as well as a strong presence from the Taranaki Swiss Club, appropriate to the Swiss connection with which the town has been popularly associated.



Dave Hunger on a penny farthing.



The Kaponga Rugby Club shows its colours on Parade day.



LEFT: Easter Sunday and a pipe band leads the parade along Egmont Street to the Kaponga Primary School.



LEFT: The town's Swiss connections were also on display.



Fitzgerald Contracting Kaponga



Proud to support Kaponga Primary School and congratulations on their 125th Anniversary!

Contact: Arnold & Edith (06) 764-6604 or 0274 509 731



Plunket show their support



The parade appeared to be a hit with everyone.

HARDINGS FUNERAL SERVICES LTD

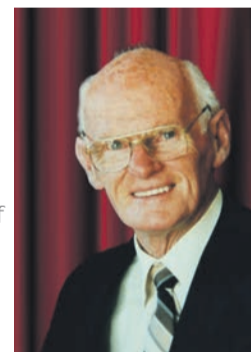
Part of central- South Taranaki for nearly 103 years



Phillip Harding

The May of 1913 saw Phil and Annice Harding journeying by horse and gig from Hawera to make a new life together in Kaponga. They had purchased a small joinery and undertaking business from Mr Dilly there, and thus the company of P H Harding was born.

Subsequently 3 generations of Hardings then attended the Kaponga school just down from the homestead. We lay on our backs on the playground under the hot summer sun watching the waves of thistledowns wafting across ever so high in the sky, and listened to Gibsons' cows chewing the grass next door. We skated on the ice in front of the lunchroom at cocoa time in the winter. We fought our battles on the huge field that now looks so small, and learnt our times tables from the teacher's scrawl on the counterweighted blackboards. So much has changed.



John Harding



Kelly Judkins Bill Willing Malcolm Harding

Funeral service has changed dramatically too over the years. We at Hardings are proud of our ability to listen and understand, to adapt, and especially of our eye for detail and ability to anticipate. Helping our families to create a truly memorable occasion is our hallmark, and this places us at such an advantage. Most importantly, however are the buckets of local knowledge we have. You only get such an amazing treasure store from being the best at what you do for a long, long time... That is what we are about.

Our point of difference? Almost 103 years of professionalism – and yet still at each occasion we are called to officiate at, we will strive to re-earn our reputation of excellence...

HARDINGS Phone 06 278 8633



17 Regent St Hawera Email hardingsfuneral@xtra.co.nz

'Helping Families Create Funerals Of Significance'

Budding agricultural expert receives Ravensdown scholarship

Eighteen year old Lincoln University student Lucy Bell, from Palmerston, is the latest winner of the Hugh Williams Ravensdown Memorial University Scholarship.

The scholarship was established in memory of the late Hugh Williams, who was a Ravensdown director from 1987 to 2000. The grant offers sons or daughters of Ravensdown shareholders \$5,000 a year for the duration of their studies for a number of agricultural or horticultural degrees at Waikato, Lincoln or Massey Universities.

Stuart Wright, Deputy Chairman at Ravensdown and Scholarship Committee Chair said the scholarship is about developing future capability in the agricultural sector, "This scholarship is not just for the benefit of Lucy, it benefits all New Zealanders to invest in the next generation of agricultural professionals be they scientists, farmers, veterinarians, or extension professionals.

"The more young people we can help get ahead in the agriculture sector the better."

Currently in her first semester at Lincoln

University, Lucy says she is really enjoying the chemistry and biology classes and is looking forward to starting the animal, plant and soil classes next semester.

"I've been lucky enough to have been brought up on a farm and have always wanted a career in agriculture," said Lucy. "At high school I developed a strong interest in the sciences. Having observed the impact that Lucerne and summer brassicas have made to the profitability of my family's farm has helped spark an interest in plant science for me."

"Once I've finished my degree I'd like to become a part of a graduate programme, like the one they have at Ravensdown. I'm really interested in plant development for places like our home in the East Otago hill country. I would love to be able to help with development of legumes that are able to thrive on harder hill country, and therefore make this class of land more profitable."



Stuart Wright, Ravensdown Deputy Chairman and Scholarship Committee Chair and Bruce Wills, Ravensdown Board member, catching up with scholarship winner Lucy Bell.

Opunake Communities Kindergarten

A G M

Wednesday May 8 2016 7.30pm

at Headlands Restaurant

Everyone Welcome

We welcome your contributions
Please send to editorial@opunake-coastal.news.co.nz

NZ FARMERS LIVESTOCK

For all your Livestock requirements Servicing the Coast

Contact

Tim Hurley - 027 445 1167

Bryan Goodin - 027 531 8511



Corkill SYSTEMS LTD

5 TASMAN ST, OPUNAKE

FREEPHONE: 0800 107 006 PH: 06 761 7531 - FAX 06 761 7336

We offer a range of **Silent Diesel and Industrial Tractor Mount Power Generators**
There is a full range of cabling and outlet options to suit your personal requirements.

- Dials facing cab (one man operation)
- Heavy Duty Driveshaft
- Heavy Duty Construction
- 1000RPM Direct PTO Driven (no gearbox or belts)



Three Sizes to Suit all sheds:

37.5 kva 62.5 kva 93.5 kva Other sizes available on request



Check out our new website

www.corkillsystems.co.nz

ravensdown

Congratulations to Lucy Bell, recipient of Ravensdown's Hugh Williams Scholarship

0800 100 123 | ravensdown.co.nz



Woodward's FIREWOOD

Animal Bedding For Stand Off Pads Calf and Goat Sheds Wintering Barns

- Untreated ground up waste wood —
- Raw material stockpiled then ground to order —
- Pick up or delivered to your farm —
- 9m³ truck loads —
- 65m³ truck loads —

06 755 2047

124 De Havilland Drive, Bell Block • office@woodwardsfirewood.co.nz

www.woodwardsfirewood.co.nz

Pasture best option as Stratford dairy farmers face payout pressure

As Stratford farmers see Ravensdown leading in the area of fertiliser price cuts for the third time in four months, Regional Manager Mike Davey is advocating a back-to-basics approach when it comes to focus on pasture.

“We’ve been saying for a while now that soil is like a farm’s engine room, and the cheapest and most important asset you have is your grass. Your most important investment is in the fuel to grow it,” said Mike.

Mike believes dairy farmers searching for efficiencies in their operation know that home-grown, fully-utilised pasture has always been the most cost-effective feed. Even before the current downturn, many farmers were not only looking at “output ratios” such as milk solids per cow, but also at “feed efficiency” ratios such as the cost of producing a megajoule of metabolisable energy per kg of dry matter. “Even though urea costs less than it did, it is still a significant investment, and farmers turn to Ravensdown to help them achieve the “four Rs”: fertiliser in the right product, in the right



Johanna and Dion Bishell receive the Ravensdown Pasture Management Award from Mike Davey at March’s New Zealand Dairy Industry Awards in Taranaki

amount, at the right time, in the right place. More accurate soil test results, more certified advisors, more precise spreaders, better mapping technology, and easier pasture measurement are just a few examples where Ravensdown helps with this,” added Mike.

Just because urea is cheaper than it’s been in nine years

does not automatically mean more N is applied, but what is applied will be more cost-effective. “It’s our job to deliver the value so farmers have the option of placing any savings into additional fertiliser tonnages, or into other areas of their business. Farmers decide how they use that newly-created surplus according to their financial

position, farm goals and region’s regulations,” concluded Mike.

Ravensdown’s Chief Scientific Officer, Ants Roberts has produced a series of videos about Powering Up your pasture. Just check out the website or the Ravensdown YouTube channel to learn more.

WANTED
MACROCARPA
TREES/LOGS
TOP DOLLAR PAID



Mangorei
PLUS

PH: 06 752 2892 or
CLIVE 0274 473 058

Promote your events in the

OPUNAKE & COASTAL
NEWS

We welcome your contributions
Please send to
editorial@opunakecoastalnews.co.nz

Quality Bikes
Quality Accessories
Awesome Service



15% Discount off your
next SERVICE when
paying by RD 1
Farm Source Card!

T & C's apply



106 - 116 Leach Street, New Plymouth
Ph:067579747|www.mach1yamaha.co.nz



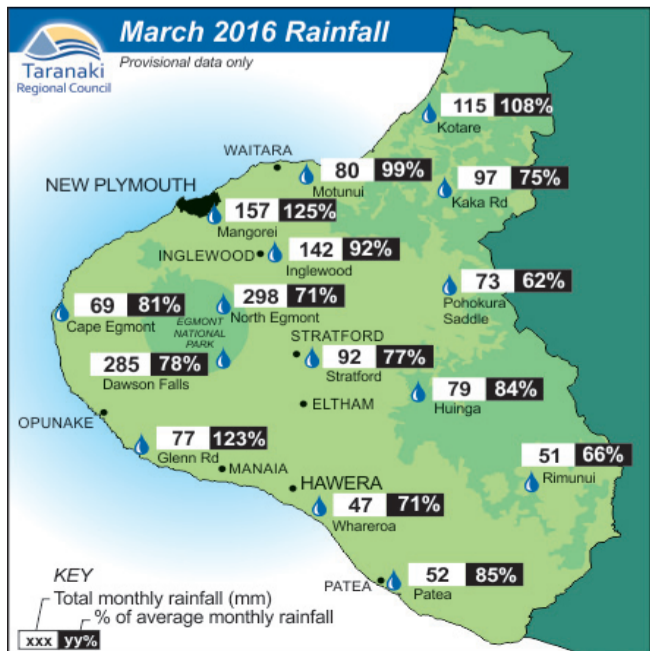
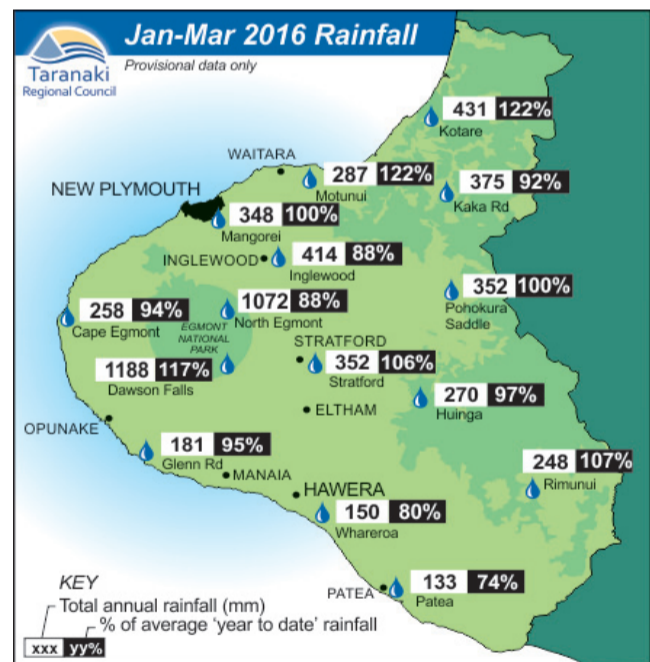
6354275AG

March brings mixed rainfall for province

Rainfall for March was very mixed with rainfall totals ranging between 53 per cent and 174 per cent of normal, according to Taranaki Regional Council figures.

Brooklands Zoo recorded 57 per cent of its normal monthly March rainfall in the space of two hours on March 17. The site recorded 37.0 mm in one hour and 56.0 mm in two hours. Rainfall for March was very sparse (recorded on just 6 to 14 days throughout) and was quite localised. Most of the rainfall for the month occurred from March 16-18, and also on the 24th and 26th March. Southern Taranaki from Hawera south all recorded below normal rainfall for the month by between 53 per cent and 85

per cent. Year to date rainfall totals are between 74 per cent and 122 per cent of normal. Motunui and Kotare have both recorded 122 per cent of normal to date, while the Patea rainfall site has only recorded 74 per cent to date.



OUR NEXT ISSUE IS
 DUE OUT
APRIL 22

PHONE US TODAY TO
 ADVERTISE 761 7016

Coastal 027 255 8677
 06 752 8138 **Welders**

BOOK YOUR
WINTER SHED MAINTENANCE
NOW!

Call today!

We are a local company training local people.
Email us at coastalwelders@xtra.co.nz
WAREA

Easter success for Taranaki Country Basketball

Over Easter, Taranaki Country Basketball (TCB) sent seven teams away to attend the Mel Young Memorial Classic. The younger players (U13s) went to Rotorua, while older players headed to Tauranga. The Easter Tournament is the first key event of the year and gives players and coaches a chance to gauge where they are, with the Taranaki representative season just around the corner.

The games at the tournament were fiercely competitive, especially the games against the teams from New Plymouth. A game between the U13 Boys teams went into double overtime with New Plymouth eventually winning by one.

Our U17 boys B team played the New Plymouth Boys A team, and won by 29 points. This was an outstanding game and coach Haydn Langton was very proud of his team.

The TCB U17 Boys A team competed in the Elite grade of the competition, which was made up of teams from some of the top associations in New Zealand as well as 'The Country Cup' team

from Australia. The team, coached by Solly Hughes, included TCB's three New Zealand Age group representatives – Matthew O'Connell, Cameron Trethewey and Morgan Trott. The remainder of the team was made up of players from the TCB catchment area.

The boys had mixed results in the pool play, with a win and a loss to Waikato and Palmerston North respectively. In the quarter finals TCB accounted for Waitakere easily with Oscar Robertson having a superb game from outside the arc.

The opportunity for redemption came early for TCB when they faced Palmerston North in the semi-finals. The Palmerston North team had previously been NZ age group champs, and having beaten us in pool play went into the game confident for the win.

TCB made a great start taking an early lead, but this was a game that was going to be dominated by the whistle, which made for an intense and frustrating spectacle for all involved. The score saw-sawed through the 3rd and 4th quarters with Cameron

Trethewey making some big plays and bench players Fletcher Jennings and Latrell Teka showing some good touches. The game finished with Latrell sinking a couple of clutch free throws in the last 10 seconds to secure the win by three points.

Australia was TCB's next opponent. The final game began with another great start from TCB gaining double digit leads through the first and second quarter. Once again the boys got into foul trouble, and this allowed the crowd to get close. This brought the crowd into life with chants of "Ozzie, Ozzie, Ozzie" ringing around the stadium. This was countered by "Defence" chants from TCB's junior teams, who had chosen to stay and support their boys in the final rather than travelling home after their earlier final games. This made for a great atmosphere, and with five minutes to go, it was anyone's game.

Anyone who watches basketball knows that in the final moments of these close games, the players who earn the big bucks really have to stand up to the pressure, and this certainly was no



Taranaki Country Basketball enjoyed Easter success at Rotorua .

different in this game.

Cameron Trethewey hit some massive three pointers in transition, Morgan Trott gained some precious offensive rebounds, and Matthew O'Connell's accurate free throw shooting and pivotal decisions down the stretch led to TCB's

ultimate victory. The final result saw TCB winning by an outstanding and hard fought, ten point margin. Congratulations to the boys, coaching staff and management on a great result.

A huge thanks must also be extended to all the coaches,

managers, parents and players for a very successful and enjoyable weekend. Hard work, dedication and a desire to be the best in all that you do, really does pay off and we are proud to say that TCB is taking care of business, yet again.

Taranaki Rugby announces surplus for third consecutive financial year

At their 130th Annual General Meeting held at the Okato Rugby Clubrooms. The Taranaki Rugby Football Union announced a net operating surplus for the 2015 financial year of \$113,469 before depreciation, Chiefs investment and rebates to clubs and schools. This leaves an announced surplus of \$31,767. This is the third successive year

that Taranaki Rugby has posted a net surplus. The TRFU said a combination of events contributed to the final profit posted for the 2015 financial year. A growth in core income was achieved with increases in community funding and New Zealand Rugby funding, as well as growth in ticketing and memberships sales over the regular

season. This core growth was particularly important without the presence of any extraordinary income such as an International Test match at Yarrow Stadium, ITM Cup home playoff matches or overseas rugby development camps. Sponsorship levels were down on 2014 which was attributed to the relatively stagnant economic

conditions affecting the dairy and oil and gas industries, resulting in several sponsors reassessing their marketing spend. Income totalled \$4,124,425 for the 2015 financial year.

Expenditure was controlled throughout 2015 with Taranaki Rugby living within their means. Increases in expenditure were in the community game

where more investment was spent on resources and age group representative teams. A large number of representative sides wore the Amber and Black hoops in 2015 with the Taranaki Under 13 team featuring in the Roller Mills tournament for the first time.

Taranaki Rugby Chief Executive Michael Collins said he was pleased with

the 2015 financial result. "The 2015 financial result is a positive outcome for Taranaki Rugby. The TRFU has invested more resources into the community game whilst maintaining a top four position in the ITM Cup. The staff have worked hard across the board to ensure rugby is sustainable in Taranaki."

All major sponsors have signed on again for 2016.

IT IS TIME TO BOOK YOUR HEDGE MULCHING REQUIREMENTS

- * Tractor & Trailer Hire
- * Deep Ripping

- * Roller Drilling
- * Hedge Mulching

- * Race & Road Sweeping
- * PowerHarrowing



Call
Jared
today!

Call
Jared
McBride at

JFM CONTRACTING

Phone 06 752 4558 Mobile 0274 775 701

I can beat him

James Langton was philosophical when discussing his last fight which he lost to Isileli Fa over six rounds on Saturday 2 April at TSB Stadium. He felt he started well in the first two rounds. "I felt really comfortable. I was the stronger fighter and was tracking him round the ring really well." He adds, "Rounds 1 and 2 – maybe I won – very close." (In the main bout Sam Rapira won against Togasilimail).

However as the fight progressed things didn't go so well for James. "I just couldn't land a real good combination. He just moved so well. As the fight went on he just became more confi-

dent."

Yet he felt the fight ended on a good note. "Round 6 was all go with both of us fighting for the win."

James had difficulty with the relentless nature of his opponent. "He kept boxing my shoulder and it was taking the power away." James admitted he was still physically sore. "I've still got a sore shoulder. My (whole) body is aching."

James pays full credit to Isileli Fa. "He had speed, power and was a lot fitter than we anticipated." He also admired his opponent as a person. "He's a lovely guy, a real nice bloke."

When asked if he was ca-

pable of beating Fa in a rematch he responded, "Yes for sure. I can beat him."

James does not see himself boxing beyond this year but says, "I want to finish this journey on a positive note." And he is still eyeing the NZ title he lost to Monty Beetham – definitely unfinished business.

However his first hurdle is a rematch with Isileli Fa. Despite the loss he says, "I felt I was (still) the stronger fighter physically."

James is looking forward to the Coastal Rumble to be held in June and he is keen to reverse the tables, "I want a re-match with this guy," he concludes.

Hawera shooting season about to start

The last two practice nights have been held and the competition is due to start in the Hawera Target Shooting.

On March 23, Joe De Costa had a personal best with a 93.2 on a whole card. In the seniors, Hayden Andreoli is showing some early form

by only dropping eight points over four cards. As shooters are using these practice nights for trying out settings and ammo, they will start to get serious as soon as the season starts for real. Scores were: Dwayne Rangi 88.2, 84.0, Alex Munro 88.0,

72.3, Rico Symes Patterson 91.1, 91.1, Christina Starr 85.0, 89.1, 86.1, Joe De Costa 98gr, 93.2, Bruce Cameron 97.5, 194.9, Jason Cameron 96.6, 192.8, Hayden Andreoli 97.6, 99.3, 196.5, Frank Eustace 89.5, 193.11, Sam Gooding 94.3, 195.8

On March 30, Sean Bower and Dylan Farr both scored 100 groups and will be shifting on to whole cards soon. Christina Starr shot on her first full cards off her elbows with two scores of 81.3, 81.0. Jackson Jennings continues to improve with a 94.5 on his final card. Samuel Gooding had a 100.6 on his first card of the night. Scores were: Sean Michael Bower 100gr, Dylan Farr 99gr, 100gr, Parish Niwas 99gr, 98gr, Christina Starr 75.0, 81.3, 81.0, Jackson Jennings 92.3, 90.1, 94.5, Alex Munro 85.1, 85.2, Rico Symes Patterson 89.1, 91.1, Keonte Ngatai 98gr, 99gr, Clayton Robinson 97gr, 70.0, Joe De Costa 96gr, Mathew Peters 91.0, 82.4, Hayden Andreoli



Jason Cameron at the marking table

96.3, 196.7, 194.10, Frank Eustace 195.9, 197.10, Samuel Gooding 195.11, 192.5, Bruce Cameron 195.10, 199.14, Jason Cameron 96.3, 97.5, 97.5, Frank Eustace



Joe De Costa proudly holding target Rifle

Eltham Smallbore Rifle Club look forward to new season

A large number of shooters attended the last pre-season shoot at the Eltham Smallbore Rifle Club, and some excellent scores were made.

On the grouping cards, several of the Junior shooters achieved 100's, and show promise of more to come.

Regular senior shooters maintained high averages, and a couple of up and coming shooters are starting to make their mark.

The season officially starts on April 4 at the range on Piny Drive Eltham. All equipment and coaching is provided. No firearms license is required for those attending our club nights.

Scores were: Grouping cards: Keira McLeash 100, 100; Matt McLeash 100; Noel Hainsworth 98; Chloe Barkla 95, 97, 100; Cameron Symonds 99, 99; Adam Swainson

99, 100. Full cards: Bob Bramley 93.0, 90.1, 92.1; Clare Bramley 92.2, 96.1, y 94.1; Matt McLeash 87.1; Noel Hainsworth 81.1, 87.0; Murray Chinery 93.3, 88.3; Paul Tidswell 98.6, 98.5, 98.7; Paul Longstaff 96.2, 93.1; Alan Drake 91.1, 96.4; Frank Eustace 97.5, 98.4, 99.6; Heather Symonds 86.1, 93.1, 92.1; Cameron Symonds 86.0; Adam Swainson 77.0;

Don Litchfield 93.2, 93.2; Garry Rowlands 98.4, 98.5, 97.5, 98.6; Brian Hicks 96.5, 97.2, 96.2; Stephen Hicks 85.0, 87.1, 89.1; Adrian Clark 96.4, 96.5, 96.4, 98.6, 96.5, 95.4. Alan Drake

Some very good shooting by the senior shooters showed they were in good form leading in to the start of the new season.

Paul Longstaff shot his first possible, Alan Drake shot his first possible for three years, and Paul Tidswell trumped them both with a double possible.

On the grouping targets, Cameron Symonds and Adam Swainson had a good battle, with both of them scoring double 100's.

On the full cards, Paul Tidswell lead the senior shooters with scores of 100.6, 97.3, 99.8, and 100.9. Other scores were: Paul

Longstaff 94.1, 96.5, 100.5; Alan Drake 100.8, 94.2, 97.8; Murray Chinery 89.0, 90.1, 96.3; Bob Bramley 90.0, 92.2, 91.3; Clare Bramley 89.1, 87.1; Garry Rowlands 97.3, 95.3, 98.5; Don Litchfield 95.2, 95.4; Heather Symonds 91.2, 89.2, 93.2; Adrian Clark 95.3, 95.4, 92.2, 95.1; Brian Hicks 90.1, 91.4, Stephen Hicks 88.2, 93.0, 92.2.

Alan Drake

Promote your events in the

OPUNAKE & COASTAL NEWS

B & R Barron BUILDER

2475 Surf Highway 45 OKATO
PH/FAX 06 752 4044 MOBILE 0274 448106
Email: barronz@xtra.co.nz

- Houses
- Alterations
- Decks
- Bathrooms
- Kitchens
- Roofing
- Fences
- Concrete
- Cowsheds
- Farm Buildings

Use your outdoor living areas all year round



15 months INTEREST FREE
Normal lending criteria apply

- Warm & dry in winter
- 99% UV protection in summer
- Stylish & permanent
- 5 year warranty

ARCHGOLA TARANAKI

OUT BACK!

Outdoor displays at 67 Colson Rd

Phone 0800 363 433 | www.archgola.co.nz

SPOIL YOUR MUM THIS Mother's Day!



SINCLAIR **Betta** ELECTRICAL

Lot's of great gift ideas in store now!

AVAILABLE NOW AT

SINCLAIR ELECTRICAL & REFRIGERATION
31 Tasman Street, Opunake
Phone: 06 761 8084

The article below was written by Opunake & Coastal News reporter Bryan Kirk and was published in the February 4 1997 edition of Wellington's Dominion newspaper. We thought readers would find it interesting. Then the late Robert Fisher had been the long standing chairperson and projectionist for many years. A photo of Robert Fisher hangs in the foyer of Everybody's Theatre in recognition of the huge contribution he made to the Community picture theatre.

Everybody in Opunake enjoys a good night out at the flicks

By BRYAN KIRK

WHEN competition from television and video forced the owners of Opunake's only cinema to pull out, a group of locals decided they could run it themselves; 16 years later they are still running it.

The people of Opunake have kept their cinema, known as Everybody's, while larger centres have lost theirs.

And they're proud they've done it without any corporate sponsorship: since 1980, the cinema has been run by a community group, Everybody's Theatre Society Inc.

Its president, Robert Fisher, has been a projectionist there "off and on" for 27 years. He manages the local Kiwi Trading Store.

His neighbour, a fulltime projectionist, first got Mr Fisher interested. He says that though he always enjoyed movies, he had never thought about showing them.

He left school to work fulltime for Bruce Whiting whose family owned the cinema. Back then movies were shown Monday to Saturday nights with matinees on Sundays. "People treated movies as a night out," Mr Fisher says. "Now there's so many options, movies get left behind. And older people don't go to the movies like they used to."

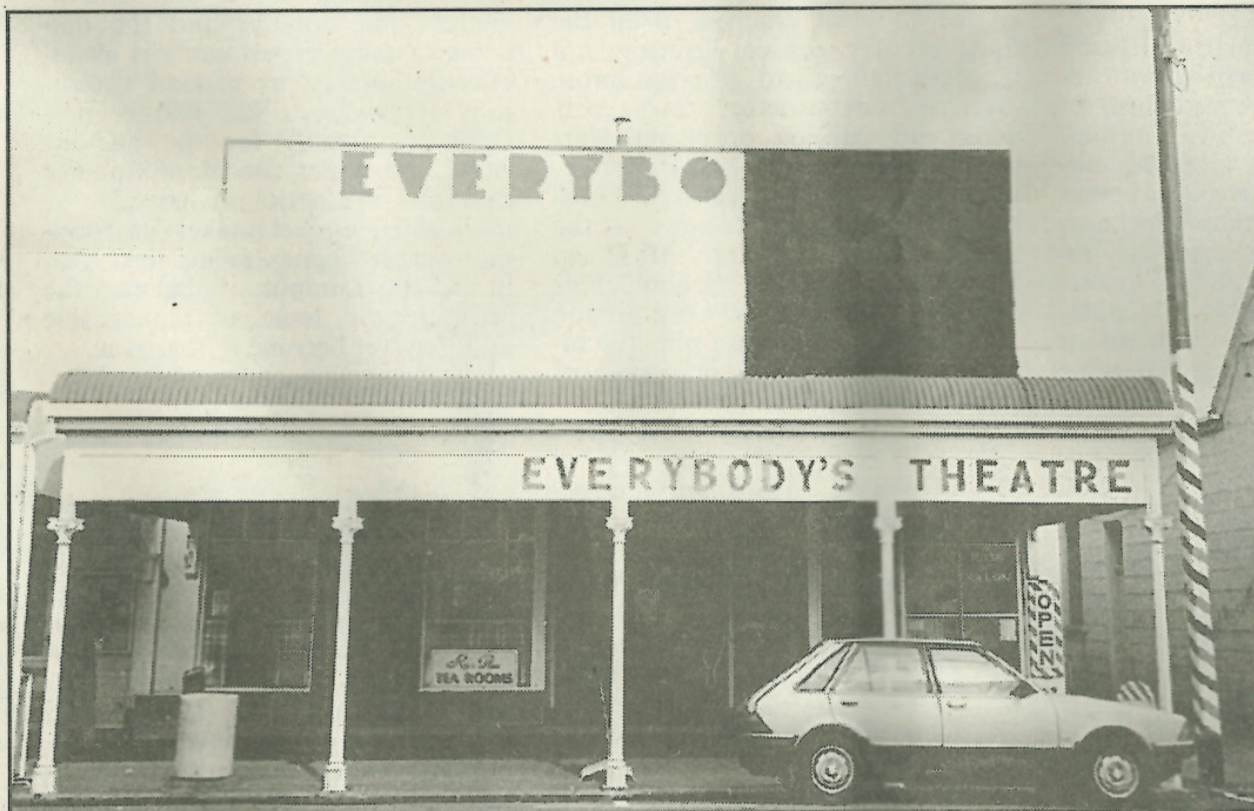
The same projectors Mr Fisher used back then are still used today. They were brand-new when installed in 1950 and still work well. "They put a good picture on the screen and if maintained correctly, they'll last forever," he says.

After two years Mr Fisher started a panelbeating apprenticeship but continued showing movies part-time.

In 1980 Mr Whiting announced he would be closing. "Television and videos put paid to movies for a time," Mr Fisher says. "Probably one of the reasons Mr Whiting got out was it wasn't profitable any more." Mr Whiting gave the Opunake people 30 days to raise the \$53,000 needed to buy the cinema. This target was reached through donations and interest-free debentures, the last of which was paid off in 1993.

Mr Fisher had been out of the movie business for a few years but returned as projectionist for the newly formed Everybody's Theatre Society. There are now four projectionists. "When we first took over there were brilliant audiences," he says. "The community owned it, so they used it." There were often live shows in those days. The Drifters performed twice and Billy T James once.

The society has made several im-



Everybody's cinema is still going strong in Opunake thanks to community support. Left: Robert Fisher has been projectionist there 'off and on' for 27 years

provements, including a new roof. "Malvina Major virtually paid for it," says society secretary Ian Wither. She performed two concerts to raise the necessary finance.

A new sound system more compatible with modern movie technology has been installed in the cinema. Mr Fisher believes this will attract people who have been going to movies in New Plymouth.

"We've taken the plunge," he says. "Hopefully it will pay for itself."

The society has had just two presidents and two secretaries. Mr Wither has been secretary for most of time.

With his wife Annette, Mr Wither came to Opunake in 1973 to teach at the high school. He was deputy principal and Mrs Wither taught business studies. Now retired, they are both active in the cinema

society, which is kept going by volunteers. "If we had to pay wages, we'd fold," Mr Wither says. The only pay is a soft drink or icecream at half-time. Though only about a dozen turn up to the annual general meeting, there are 60 to 70 people, ranging from high school students to retirees, who help with ticket sales and ushering. Movies are shown on Friday and Sunday nights with matinees in the school holidays.

Not belonging to a cinema chain means it's sometimes difficult getting new releases, Mr Wither says, "though we don't do too badly". The film *Twister* was seen by 350 people, a quarter of Opunake's population.

Mr Wither is unsure exactly how old the cinema, is though he recalls seeing an old photo with "1923" on the screen. The name "Everybody's" is cast into the concrete on the building indicating this was probably the original name.

Mr Wither says "Whiting senior" ran an itinerant picture theatre around coastal Taranaki. A truck with a projector would be backed into a hall and a picture shown. The double doors enabling the truck to back in can still be seen in many of the country halls.

Until the reopening of the Stratford cinema in 1994, Everybody's was the only cinema between New Plymouth and Wanganui.

"We keep our heads above water, and the kids off the street," Mr Fisher says.

Dominion Feb 4 1997



At the recent opening of Everybody's Theatre which has recently been extensively renovated. Downstairs where patrons can relax in sofas and easy chairs.



...and upstairs with the conventional theatre seating.



LEFT: The re-vamped Everybody's Theatre foyer and at right old theatre memorabilia on display.



WHAT'S ON



JONATHAN YOUNG

MP for New Plymouth
Need to speak with your local MP?

Monthly clinics being held in Opunake, 3rd Monday of each month. 10am-12pm at the Opunake Business Centre. Please email or phone to book a time.

OPUNAKE BUSINESS ASSOCIATION

Meet on the 1st Monday of each month.

OPUNAKE COUNTRY MUSIC CLUB

First Sunday of each month at the Opunake Town Hall, 1-4pm. All welcome

SCHNITZEL NIGHT

Every Wednesday at the Stony River Hotel, Okato

COASTALCARE – LISA KEEN AUDIOLOGY

Wednesdays 9am - 5pm, for an appointment call 027 591 4222 - 0800 555 676

SURF INN

Every day free pool. Every Friday free sausage sizzle from 5. Every Sunday afternoon. Pool comp

COASTAL YOUNG FARMERS

Meet 2nd Thursday of every month at 7pm at the Okato Bowling Club.

TARANAKI COUNTRY MUSIC HALL OF FAME, MANAIA

Running every Thursday night from 7.30pm, 11 Surf Highway, South Road, Manaia.

EGMONT EUCHRE CLUB

Meets every Thursday 1pm at the Opunake Bowling Club

CAPE EGMONT HISTORIC LIGHT & MUSEUM

Open 11am – 3pm weekends, Bayly Road, Warea.

TODD ENERGY AQUATIC CENTRE

Family fun times 10.30am to 4.30pm.

COASTAL SINGERS

7pm every Thursday night. Contact 761 8654

ELTHAM BUSINESS ASSOCIATION FRIDAY MARKETS

8am to 1pm, Carpark of Touch Point, High Street, Eltham.

PERCY THOMSON GALLERY

Connections 2016 and 18th International Collage Exchange, April 1 – 24. Refer advert.

TET CUE THEATRE PRESENTS

The Fox on the Fairway. April 2 - 16 2016. Evening performances at 7.30pm, Sunday Matinees at 2.00pm.

BUTLER'S REEF

Friday April 8 Sonic Delusion from 7pm

Sunday April 10 Open Musicians Afternoon all welcome to 2.00pm

MANAIA PRIMARY SCHOOL GALA

10.30am-2.30pm Sat 9th April

OPUNAKE COMMUNITIES KINDERGARTEN IS CELEBRATING 20 YEARS

On Thursday April 14.

THE CLUB HOTEL GALA NIGHT

Friday 22 April from 6pm. Refer advert for full details

OPUNAKE BOAT AND UNDERWATER CLUB \$100 SNAPPER FISHING COMPETITION

22nd April - 8th May inclusive. Refer to advert for full details.

FARMERS AND GROWERS MARKET

Pihama Lavender on Sunday 24th April. Refer advert for details.

ST. JOHNS FIRST AID COURSE

One day course, Tuesday 26th April starting at 8am at the Sandfords Event Centre. Refer advert for further details.

Talk art: The engineering behind Lye's work

Sat 9 Apr | 2 - 3 pm

Large Works gallery

Free entry

Len Lye Foundation director Evan Webb, who for many years has played a leading role in the maintenance and restoration of Lye's work, will talk about the Len Lye exhibition *Four Fountains* and the engineering behind his kinetic sculptures.

The art museum is in exhibition changeover as staff de-install the current exhibitions and prepare for the install of the new exhibition *Emanations: The Art of the Cameraless Photograph*, opening Fri 29 April.



The Len Lye: *Four Fountains* exhibition in the Large Works gallery. Photo: Glenn Jeffrey



TRADES & SERVICES

McNEIL DECORATING – for all your painting and decorating. Ph: Jason McNeil 027 233 4584

LAWNMOWING and section maintenance by local contractor SOS. Free quote. Ph 027 605 8437

QUALITY PAINTER AND PAPERHANGER – Ph: Bryan McNeil 027 465 8631

LAWNMOWING for commercial or residential. Free quote. Phone 021 149 7285 or email HEDBERG-S L A W N M O W I N G @ G M A I L . C O M

CARPETS second hand, large selection After Disaster Ltd 223 Devon St West, NP. Phone (06) 769 9265

HEARTLAND CONSTRUCTION for all kitchens. Ph 027 236 7129.

HomeWays LBP The Repilers – Ph: 06 215 7227

COASTAL STOPPERS. Phone Glenn 027 524 5745

HEARTLAND CONSTRUCTION for concrete work. Ph 027 236 7129.

RAHOTU PANEL & PAINT for batteries phone 06 763 8462

MULTIPLE SCLEROSIS For information and fieldworker services Ph: 06 751 2330 www.mstaranaki.co.nz

DEBRECENY BUILDING CONTRACTORS
 QUALITY CRAFTED HOMES
 Registered Master Builders
 * NEW HOMES AND RENOVATIONS
 * DESIGN MAINTENANCE
 * FARM BUILDINGS
PHONE 021 054 4845
 www.dbc.org.nz

Call us today to advertise 06 761 7016
 Next issue out April 22

FOR SALE

HAIR ANALYSIS, shows vitamin, mineral and amino deficiencies, if any bacterial or viral infections, food intolerances, etc results back within the hour. \$90 at Hardys the health shop in Centre City. 7587553

PROTECT YOUR IMMUNE system and help fight off bugs. Viral ex 60 caps \$29.90 savings \$15.50 at Hardys the health shop in Centre City 067587553

FISH OIL 1500 mg 200 caps, \$19.90 at Hardys the health shop in centre city. 7587553 Hardys the health shop in Centre City 067587553

SYSTEM WELL covers all immune areas, ie respiratory, digestive, skin, etc, buy 90 caps receive free 45 caps, \$49.90 Hardys the health shop in Centre City 067587553

NEW AIR RIFLES from \$79 at Collins Sports Centre.

WANTED TO BUY

SCRAP METAL - for all scrap metal Taranaki-wide, give us a call. Molten Metals (06) 751 5367 www.moltenmetals.co.nz

TO LET

HOUSE FOR RENT tidy three bedroom home, heat pump plus log fire, HRV, modern kitchen, single garage, workshop, rural, private \$200 pw. Phone: 761 7001 or 027 289 8656

TO LET

Opunake, Kaponga and Patea One-bedroom Council pensioner housing units. Recently decorated. No pets, non-smoking. Applicants must be 65 years and over. Bond and references required. \$96 per week including lawn mowing. Contact Katherine Pollard, (06) 278 0555.

Call us today to advertise 06 761 7016
 Next issue out April 22

PUBLIC NOTICES

HAWERA CHRISTIAN SCHOOL
TERM TWO STARTS
 Monday May 2
 Call in for pre-enrolment or information

466 South Road, Hawera - Ph: 06 278 4210
 www.hawerachristian.school.net



Growers & Makers Market
 Sunday 24th April
 10am - 5pm

In the premises of Pihama Lavender. \$10 per stall.
 Contact Liz 0210 829 8058 or pihamalavender@outlook.co.nz for details

EXPRESSIONS OF INTEREST

invited for groundsman position for Rahotu Cemetery and Domain along with mowing of Rahotu School Field.
 Work involves: mowing, hedge trimming, spraying and weed eating.
 Hours: Cemetery approx 20 hours per month
 Domain approx 40 hours per month

Applications close 20th April 2016
 Replies to: A & W Mullan
 227 Tipoka Road, RD 35, Rahotu

PUBLIC NOTICES



MEETING NOTICE

Storm Water Repairs and Improvements

Wednesday 20 April 2016 at 7pm
 A meeting to provide an update on works completed since the flooding event in Opunake on 6 August 2015 and an overview of future plans
 Sandfords Event Centre
 All Welcome

RAHOTU DOMAIN

Tenders for lease of 12.7990 hectares of land known as Rahotu Domain on Main Road, Rahotu for a term of five years from 1st May 2016.
 Tenders close 20 April 2016

Replies to "Tender"
 c/- A & W Mullan
 227 Tipoka Road, RD 35, Rahotu
 Please note: the highest or any tender not necessary accepted.



Opunake Business Association
 Meeting 1st Monday of each month at 5.30pm.
 Hughsons & Associates Boardroom at the Opunake Business Centre.



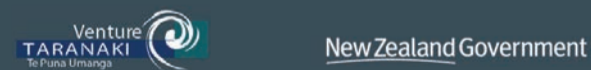
CALLING ALL CURIOUS MINDS
 HE HIHIRI I TE MAHARA

If you've got a great idea that could make a difference to your community, we could help with the science to make it happen.

Curious Minds offers funding to community groups, schools or businesses to work with scientists on local research projects.

Applications close on 29 April 2016.

For info: Lucy Graydon, Venture Taranaki, on 06 757 6054 or lucy@venture.org.nz



CURIOUS MINDS IS A GOVERNMENT INITIATIVE JOINTLY LED BY MINISTRY OF BUSINESS, INNOVATION AND EMPLOYMENT, MINISTRY OF EDUCATION AND THE OFFICE OF THE PRIME MINISTER'S CHIEF SCIENCE ADVISOR

\$1000 Snapper Fishing Competition

Hosted by **OPUNAKE BOAT AND UNDERWATER CLUB**
 22nd April - 8th May inclusive
 Early bird tickets \$50 per angler
 Pre-registration closes Friday 21st April at 8pm at Clubrooms, Middleton Bay with spot draws on the night. Early bird tickets also available from Collins Sport, Opunake, prior to the 21st.
 Late entry tickets \$60 per angler
 Available from Collins Sports and OB&UC Committee members throughout the competition. All boats to launch and retrieve from Middleton Bay only. Individual Skippers discretion on weather conditions and fishing days. All anglers on all boats must have valid tickets prior to fishing.
 Weigh-ins strictly 3pm-5pm daily at the Boat Clubrooms and 1pm-3pm on the final day.
 \$1000 cash for the largest snapper plus prizes for next nine places.
 Also prizes for heaviest Kahawai, Blue Cod, Trevally and Gurnard and random spot prizes.
 Prize giving from 6pm on Sunday 8th May
 Complimentary Spit Roast meal for ticket holders.

FARMBIKE SERVICES

Warea
 For all your farmbike needs

PH: 06 752 8054
 027 282 9338
 Anytime

WAREA QUARRY Metal For Sale

Metal is sold by the ton
 Fines are made to order
 Crushed drainage chip
 Ph: 027 444 9196

P.D. FLEMING LOGGING LTD

Forestry rigged & certified 33 ton loader, National Certificates in Forest Operations, Health & Safety approved. Free assessment on what your trees are worth \$\$\$
 Ph: Paul
 027 630 9922 or email: paulflems@gmail.com

CHURCH NOTICES

Opunake & Okato Co-operating Parish CHURCH SERVICES

St Paul's Opunake Co-op & Rahotu
 Opunake Cooperating Parish St Pauls, Havelock St, 9.30am every Sunday and the
 Rahotu - Wesley - 11am first Sunday of the month.
 Oakura - St James - 10am, 2nd & 4th Sundays.
 Okato - St Pauls - 10am, 1st & 3rd Sundays.

Opunake Catholic Church

SUNDAY 8.30 am at Pungarehu (St Martins), 10am at Opunake (Our Lady Star Of The Sea).

Other areas

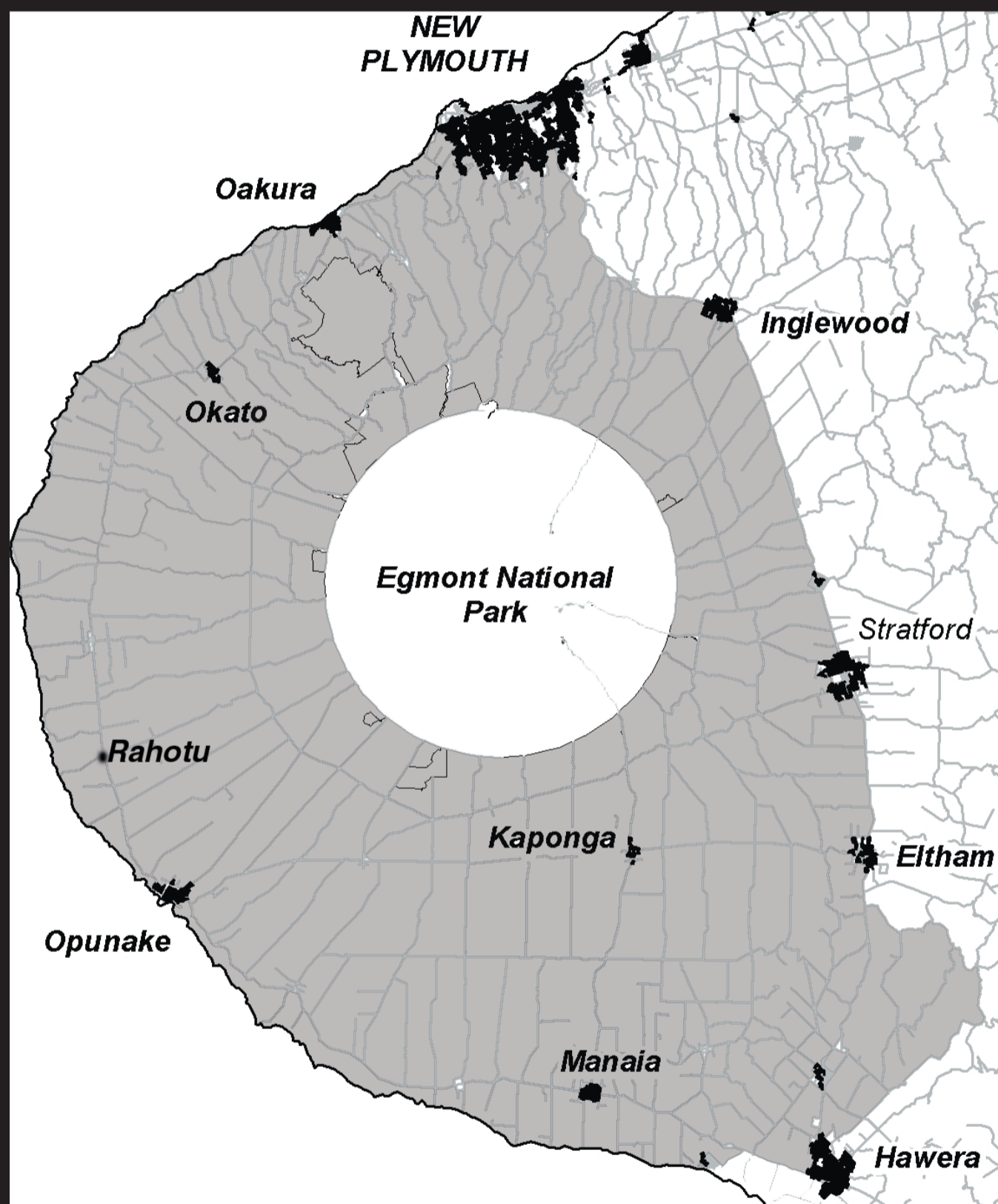
Manaia - Sacred Heart - 1st & 3rd Saturdays at 5pm (2nd, 4th and 5th Sat at Hawera's St Josephs).
 Kaponga - St Patricks, Sunday 8.45am

ALL WELCOME

THE WAVE

Pentecostal Church 64 Domett Street, Opunake
 Sunday Services 10.30am
 Women's Group 10.30am Tuesday
 Men's Group 7 pm Wednesday
 Youth Group 7pm Friday
 Come along or contact Pastor Murray 027 688 7378

WANT TO DO BUSINESS IN OUR AREA? TALK TO US



Opunake and Coastal News is distributed free to every home and business within the rural area, bounded in the north by the New Plymouth city border, extending east to Egmont Village, and around to the edge of Stratford, south to the Hawera city border and inland to Kaponga and through Eltham.

We are an independent newspaper based in Opunake, which is targeting both the towns and rural communities and we aim to have news coverage within all the areas of our distribution.

We want to be involved with your business call today and discuss your marketing options with the team.

**COVERING
THE COAST**

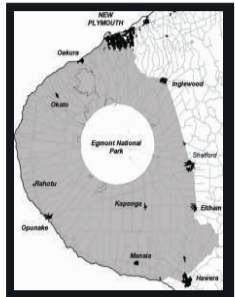
**Promote
your business
or event
in our area
call us on
(06) 761-7016**

**OPUNAKE & COASTAL
NEWS**

• 23 Napier St, Opunake • Ph/Fax 761-7016
• email: ads@opunakecoastalnews.co.nz

OPUNAKE & COASTAL NEWS

Our next issue is due out April 22
Phone us today to advertise your event
06 761 7016



Some of the Stratford Singers, with director Peter Copeland, model their Ascot hats.

It's showtime with the Stratford Singers

Stratford Singers first production of 2016 is to be a Musical Spectacular.

Back by popular demand is The Great Taranaki Steam Band led by musical maestro Christopher Luke. And to top

it off the charismatic trio of songsters 'Words with the Birds' will again wow the audiences.

The Singers have been rehearsing since February under the baton of music

director Peter Copeland with accompanist Marina Roskilly. Shows to be featured are blockbusters Oklahoma, My Fair Lady, and South Pacific, the outstanding musicals of the 1940's and 1950's.

The performances will be held in the TET Kings Theatre, Stratford on June 11 and 12 - write these dates in your diary.

The GOOD HOME
NEW PLYMOUTH
PUBLIC BAR & RESTAURANT 21 ARKI ST
IT'S NOT A HOUSE IT'S A HOME



Visiting New Plymouth?

Call in @ **The Good Home**

Steaks, Pizzas, Salads, even Fish & Chips!
+ amazing Desserts!

Even a cold Beer or glass of wine!
We have all bases covered.

Open for Brunch, Lunch and Dinner
Proud supporters of the Coast!

Ph: 06 758 4740



Opunake Music Group planning for a concert.

The right combination of talented people

There was a warm and welcoming atmosphere as everyone settled into the new venue at Opunake Catholic Church for Music Development Workshops on Tuesday March 29.

In the first segment of the evening, there were some words of wisdom from experienced musician and singer, Ashley Pedersen. He spoke about the different styles and genres of music, and said a good concert should encompass a wide variety of these to make it interesting and varied for an audience.

He asked, "Does anyone know how many music genres there are?" Dead silence, as he held up an eight-page list of around 379 genres, from punk rock to chamber music.

Up until now, artists have been coasting along, performing various items, while getting to know each other.

"The time has come to select a repertoire in which fellow artists can manage and enjoy complementary participation", continued Ashley Pedersen.

He asked everyone to choose three songs each to work on, with the objective of forming groups.

"If we get the right combination of motivated talented people together we can create anything we want".

Song possibilities were chosen on Tuesday night. Since then, some of those who were unable to attend have submitted more material, increasing performance

content for the concert.

In the second half of the evening each artist performed individual items. First up was Pat Dudley, a lady with a wicked sense of humour.

She joked, "My accordion is the perfect chest expander, Dolly Parton uses one all the time".

After a brilliant introduction, she then proceeded to play a selection of foot tapping tunes on her squeezebox. The response said it all, "you rock".

Jo Kerry and Chloe Danz, mother and daughter duo, christened the new venue appropriately with a moving rendition of "Hallelujah". Everyone was spellbound. Then Russell Wicks puckered up his "Lucky Lips", with his unique version of the

Cliff Richards classic, followed closely by Simon Forsyth, dancing barefoot to a freestyle dance on the church lounge carpet.

Larry, a professional musician, originally from U.S.A, now based in New Plymouth, added a valuable contribution to the evening with some rock violin, as well as tinkling on the ivories with an improvisational jazz piece. This was an example of what the young musicians can aspire to.

All artists willing to perform, and work toward future live concerts are welcome to join us at the next meeting at 7.30pm on Tuesday April 12 at the Catholic Church lounge, 33 Whitcombe Rd, Opunake.

Anne Montgomery

What's On **butlers reef**
FRIDAY APRIL 8
'SONIC DELUSION'
from 7pm.
SUNDAY APRIL 10
OPEN MUSICIANS AFTERNOON
All welcome from 2.00pm
1133 Main South Rd, Oakura
Phone 06 752 7765 - www.butlersreef.co.nz

Calling all Entertainers
7:30pm Tuesday, 12th April 2016
Young, old, amateur, professional.
Are you a musician, singer, actor, poet or dancer?
Do you have a talent that can entertain?
Colour Conversions (Video, Audio and Graphic Productions) are holding regular performance driven evenings that will result in creating an entertainment platform for covers and original performances.
Join us for the beginning of a new opportunity - be part of future live shows.
Bring your own instruments, basic amplification will be provided.
Call us on 027 897 8941 for details. The eleventh gathering - 7:30pm Tuesday 12th April 2016
Catholic Church, 33 Whitcombe Road, Opunake.
Web Site www.colourconversions.com
Colour Conversions Limited
Video, Audio and Graphic productions
027 897 8941

Manaia Primary School Gala
10.30am-2.30pm Sat 9th April
Pig on the Spit-**Venison Sammies**-BBQ-Slushies-Coffee & Cake-Quick Fire Raffles - **Needle in the Hay Stack** -**BIG DIG**-Fish for a Drink-**Bouncy Castle**-Splat the Rat-**Zorb Balls**-Dunk the Clown-**Laser Strike**-GARAGE SALE-Raffles- Fire Engine Rides-Trike Rides-Cake Stall
AND SO MUCH MORE!!!
EFTPOS Available

Collages from around the world in Stratford
107 artists, from 13 different countries are taking part in the 18th International Collage Exchange. Do have a look at the Virtual Tart website. I hope you like the show. And if you're within reach of Stratford in New Zealand, the exhibition of the works offered for sale opened at Percy Thomson Gallery on April 1.
Dale Copeland

Last Paradise: Saving the country

If you grew up in rural NZ you may have forgotten the freedoms we had, how the countryside looked then and what we called adventure. The Kiwi farm has often been coined as the cradle of innovation, from the jet boat to the world's biggest scientific project. But our rural communities and lifestyle have suffered as urbanisation drives people to increasingly congested cities, leaving ghost towns along our once vibrant coast towns and replacing innovation with consumerism. The film "Last Paradise" aims to reverse this global problem of urbanisation and re-establish the rural lifestyle as the hub of innovation and community. All through a 45 year quest for adventure paradise.



the limits with the forces of nature. It began with my mother, who was raised in an orphanage and escaped it all to become a wildlife cinematographer in Africa during the 1950's. My parents raised four boys remotely and we all became addicted to that daily brush with danger. I began filming at the age of 15 with a broken camera that I bought in a pawn shop because as a kid I was driven by the dream of what this film would be," Clive said.

With a Master's Degree in physics and a career in technology innovation, including the first Digital movie camera and climate monitoring system, Clive skilfully incorporates scientific and educational elements into an eye opening fun filled cinema experience for any age.

Opunake locals will have a chance to experience the film at a special screening event of the film next Friday 15th April at Everybodys Theatre.

Prior to next Friday's event at Everybody's theatre, Opunake High School will be treated to a sneak preview of the half-length version of LAST PARADISE prepared for National Geographic which has toured schools to inspire the next generation on studying science, and creating an exciting vocation - This will whet their appetite for the main feature film on Friday which is an inspirational event for all the family.

Tickets are \$15 and available from Debbie Campbell or Maree Drought. Filmed in 45 years of jaw-dropping original footage and created with Peter Jackson's Lord of the Rings team, this film has won several major

international awards. It is hugely inspirational for all the family and will make you proud to live here.

"As director of the film, I shall be presenting the screening at the special event. The presentation will be similar to Australian events which have inspired people of all ages about life's adventure," he said.

In the remote wilderness, when necessity was the mother of invention, a maverick bunch of Kids began experimenting with something that would change the world of adventure travel.

Passionately driven to innovate new ways of tapping into nature's forces for adrenalin, they set off in the 1960's and

1970's on a global quest for adventure paradise, joined by cameraSkid Clive Neeson. The culmination of their 45 year global paradise search turns out to be our own.

"It is my life's work. We captured on film the pioneering of extreme sports, that is, those which engage the wilderness and push



Director Clive Neeson will be there to present the film and reveal the deeper meaning behind its story.. From the comfort of the armchair they can explore our amazing planet in the 70's with the original adventure pioneers like AJ Hackett, years before tourism, and discover how Taranaki became the world capital of adventure, but also discover the main issues facing us and what future lies ahead. You can get a taste of the film by watching the trailer at www.lastparadisefilm.com. But beware, the real meat is in the hidden meanings.

Deputy PM to speak in Opunake



Bill English

Mr English is also hoping to look at local tourism initiatives on his visit to Taranaki.

Deputy Prime minister and Finance minister Bill English will speak at the Sandfords Event Centre on Friday April 8.

The evening is part of a visit being hosted by New Plymouth MP Jonathan Young and Whanganui MP Chester Borrows. All three will be at the meeting which starts at 7pm.

With issues facing the province about the state of the dairy and energy industries, it will be a chance to meet all three and hear Mr English speak about the economy and what's going on in the country, as well as ask questions.

AN EVENING WITH

BILL ENGLISH

Jonathan Young & Chester Borrows

BILL ENGLISH: DEPUTY PRIME MINISTER, MINISTER OF FINANCE

Fri 8 April 2016, 7pm, Sandfords Event Centre, Tasman St, Opunake

Authorised by Jonathan Young MP
Cnr Gill & Liardet St, NP. Ph 06 758 2919

EVERYBODY'S THEATRE

Opunake - MOVIES - BOUTIQUE THEATRE - HIRE

For information email: everybodystheatre@gmail.com or check facebook- Everybody's Theatre
www.everybodystheatre.co.nz

Lollies, popcorn, drinks, ice-creams, chocolate bars, tea/coffee for sale

APRIL

Adults \$10, Students 4-16 \$8 Under 4 Free
Senior Citizens \$8. No Eft-pos

<p>How to be Single Comedy, Romance 109min M Offensive Language & sexual references Helping Alice navigate her way through an unfamiliar city is Robin a fun-loving, wild co-worker who enjoys partying and one-night stands. Saturday 9 @ 7pm Sunday 17 @ 7pm Friday 22 @ 7pm</p>	<p>10 Cloverfield Lane Action, Mystery, Science Fiction, Thriller 103min M Violence & content that may disturb After surviving a car accident, Michelle wakes up to find herself in an underground bunker with two men. Saturday 9 @ 1pm Wednesday 20 @ 1pm Saturday 30 @ 1pm</p>
<p>HAIL CAESAR! Comedy 106min PG Coarse Language In the early 1950s, Eddie Mannix is busy at work trying to solve all the problems of the actors and filmmakers at Capitol Pictures. Friday 8 @ 7pm Saturday 16 @ 7pm Wednesday 20 @ 7pm</p>	<p>Brooklyn PG13 Drama 111min An Irish immigrant in 1950s New York falls for a plumber but faces temptation from another man. Sunday 10 @ 7pm Wednesday 13 @ 1pm</p>
<p>Batman V Superman: Dawn of Justice Action, Adventure, Science Fiction, Blockbuster 151min M Violence Convinced that Superman is now a threat to humanity, Batman embarks on a personal vendetta to end his reign on Earth, while the conniving Lex Luthor launches his own crusade against the Man of Steel. Wednesday 13 7pm Sunday 24 7pm Saturday 16 1pm Friday 29 7pm</p>	<p>Last Paradise - \$15 Special Screening with Director on 15 April Adventure, Historical PG Family-friendly, Life-changing inspiration 104 mins Director Clive Neeson will attend this special screening to reveal the secrets behind its making, so bring along some friends and experience amazing Taranaki on the world stage. Trailer www.lastparadisefilm.com Friday 15 @ 7pm includes light supper \$15 ticket Also screening Saturday 23 @ 7pm</p>

Wednesday	Friday	Saturday	Sunday
	8 Hail Caesar! 7pm	9 10 Cloverfield Lane 1pm How to be Single 7pm	10 Brooklyn 7pm
13 Brooklyn 1pm Batman V Superman 7pm	15 Last Paradise 7pm Special screening \$15 ticket	16 Batman V Superman 1pm Hail Caesar! 7pm	17 How to be Single 7pm
20 10 Cloverfield Lane 1pm Hail, Caesar! 7pm	22 How to be Single 7pm	23 Kung Fu Panda 3 1pm The Last Paradise 7pm	24 Batman V Superman 7pm

Movies coming: Divergent: Allegiant, Zootopia,

Our next issue is due out April 22. Phone us today to advertise



The cast of 'The Fox on the Fairway'.

The Fox on the Fairway is hilarious fun

Cue Theatre's latest production, a comedy, is loads of fun. The play 'The Fox on the Fairway', which was written by Ken Ludwig, was ably directed by Joan Ertel. This review was of the opening performance on Saturday April 2 in Inglewood.

The season runs from April 2 until April 16 and if you haven't bought a ticket make

sure you don't miss out, as this play is hilarious. Tickets can be purchased from Inglewood Book Centre.

Alan Stevenson and his team must be commended for their impeccable sets, which enhanced the production.

The acting is excellent, with standout performances from Helen Cloke (playing flightly waitress Louise Heindbedder) and Karlina

Nickson (as the coquettish Pamela Peabody).

The action takes place at the Quail Valley Country Club, with this golf club taking on a rival club Crouching Squirrel Country Club, whom they've lost to five times in a row. Henry Bingham (played by Jeff Lowe), the Director thinks he has an ace up his sleeve in the form of outstanding golfer Justin

Hicks (played by Chris Allemann), who has just been employed as an assistant.

Along comes Richard 'Dickie' Bell (played by Niall Corbett), boss of the rival club and the two men try to outbid each other in devising a winner take all wager, but they get carried away and go too far. Henry even uses his wife's antique shop as part of the wager. Muriel Bingham

(played by Valda Hinz), a forthright lady, will not be remotely pleased if she loses her shop.

The big day arrives and all goes well with the star player Justin playing like Tiger Woods at his best (slight exaggeration), until a romantic misunderstanding with fiancée Louise unsettles the star, who has just one hole to play. All manner of

entanglements, romantic and otherwise, leads to all sorts of conundrums and an unexpected ending to this very funny play.

Congratulations to all who contributed to making this play so enjoyable. Remember, last performance is Saturday April 16, so don't delay, buy a ticket.

Rolland McKellar

A gala evening at Club Hotel

The Club Hotel is hosting a gala evening on Friday April 22. Come along and browse the tables for great gifts for Mothers Day and great beauty and make up ideas for the upcoming ball season.

There will be stalls focused on both practicality and beauty. There will be Samantha Haden from

Nutrimetics, Jenna Belve (Belve Beauty), Park Lane Jewellery NZ Director Bridget Jones, Di Dee Bee Dressmaking and Alterations, Tracy Feaver Norwex consultant, Younique with Amanda Drought, Jacinta's Makeup and Nails@Mode, and stalls for Forget Me Not Photography, Tupperware, Jamberry Nail Wraps and

more.

There will also be contacts for Video-DVD and USB Transfers, essential to preserve those movie memories, and Jan Shoemark Glass and Mosaic Artist.

If you would like to promote your business but cannot make it on the night, send your business cards for the card table to V.Smith c/- The Club Hotel Tasman Street Opunake

Dads and Kids come along and get some ideas for gifts for mum on her special day.

Ball season is coming. The Taranaki Autumn Ball is in May, as well as the Annual School Balls throughout

the year. We have beauty and jewellery consultants available to help with your styling.

\$2 entry per person, Spot prizes and raffle.

You can purchase food and refreshments on the night at the Club Hotel main bar

If there is anyone who would like to have a stall at our event please feel free to email me. Also open to suggestions of other businesses and talents. Email: opunake45.vs@gmail.com or txt 06274 599382

Vanessa Smith



Find mum a gift for Mother's Day at the Club Hotel gala evening.

WANT TO DO BUSINESS IN OUR AREA?

OPUNAKE & COASTAL NEWS

Talk to us today!

Our next issue is due out April 22
Phone us today to advertise your event
06 761 7016

THE CLUB HOTEL GALA NIGHT

- * Park Lane Jewellery Bridget Jones
- * Tupperware Rebecca Ripia
- * Samantha Haden Nutrimetics
- * Bellve Beauty
- * Forget Me Not Photography
- * Jamberry Nails
- * Norwex, Tracey Feaver
- * Younique by Amanda Drought
- * Jacinta's Make up & Nails @ Mode
- * Di Dee Bee Dressmaking and Alterations

at THE CLUB HOTEL
Opunake
FRIDAY 22 APRIL
from 6PM!

TXT: 0274 599 382
EMAIL: OPUNAKE45VS@GMAIL.COM

WHEN BEAUTY AND PRACTICALITY COLLIDE

Hawera Repertory Society presents

DUETS
A comedy play by Peter Quilter,
Directed by Samantha Turner

15 - 23 April 2016
Repertory House

59 Collins Street, Hawera

Adults - \$28
(Booking fees apply)

Tickets on sale from **TicketDirect**